



OVER 60?

Secure this property
for up to **59% less!**

Price

£265,000

Leasehold

2x  1x  1x 

**Tully Drive, Paddock
Wood, Tonbridge, Kent,
TN12**

Wards
Helping you move forwards



Main features

- A stunning first floor apartment in a gorgeous modern development
- Good access to station for London, Town centre amenities and open countryside
- Allocated parking space
- Large lounge/diner with stylish kitchen
- 2 double bedrooms

Accommodation

FIRST FLOOR

Entrance Hall

Lounge/Diner: 16'2 x 12'7 (4.93m x 3.84m)

Kitchen: 10'5 x 9'2 (3.18m x 2.80m)

Bedroom 1: 13'0 (3.97m) narrowing to 9'6 (2.90m) x 10'5 (3.18m)

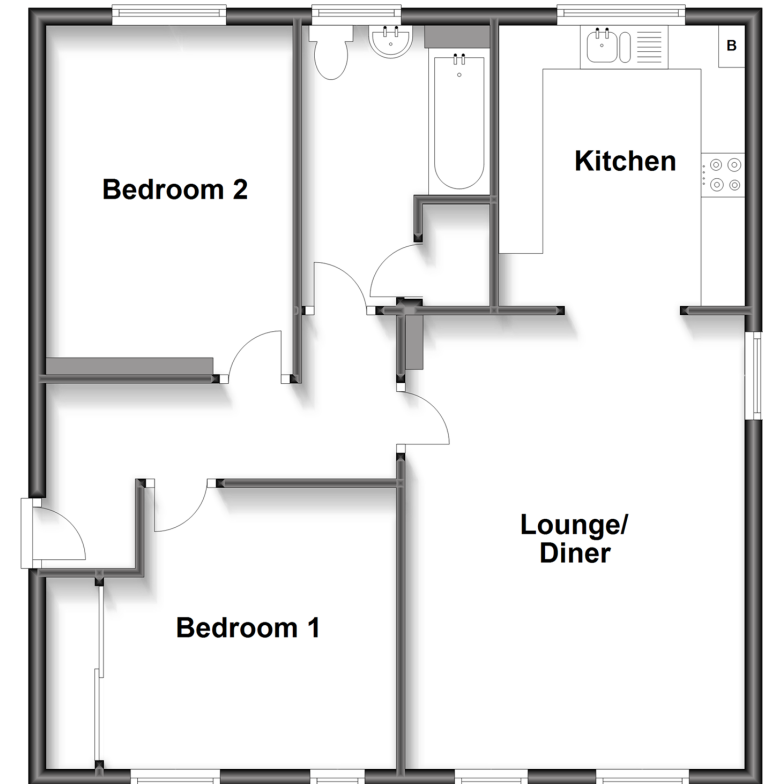
Bedroom 2: 12'7 x 9'2 (3.84m x 2.80m)

Bathroom: 10'5 (3.18m) narrowing to 6'4 (1.93m) x 7'0 (2.14m)

OUTSIDE

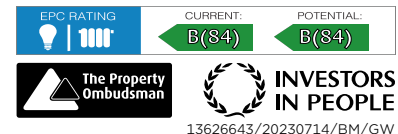
Allocated Parking Space

First Floor
Approx. 66.6 sq. metres (716.6 sq. feet)



Call Paddock Wood - 01892 836877 ■ wardsofkent.co.uk

- Legal advice should be taken to verify fixtures/fittings, planning, alterations and/or lease details
- Appliances & services are untested, dimensions are approximate and floor plans are not to scale
- Through a Homewise Home For Life Plan people aged 60+ can secure this property for up to 59% less, by purchasing a Lifetime Lease.



13626643/20230714/BM/GW