



Guide Price
£400,000

Freehold

2x  2x  1x 

**Tonbridge Road, Teston,
Maidstone, Kent, ME18**

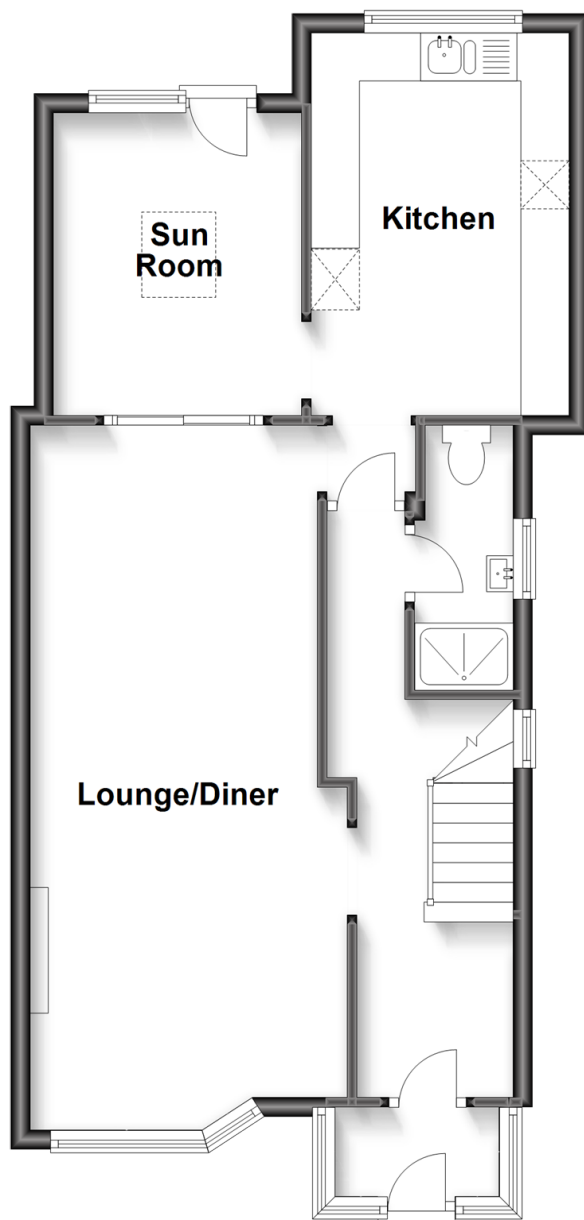
OVER 60?

Secure this property
for up to **59% less!**

Wards
Helping you move forwards

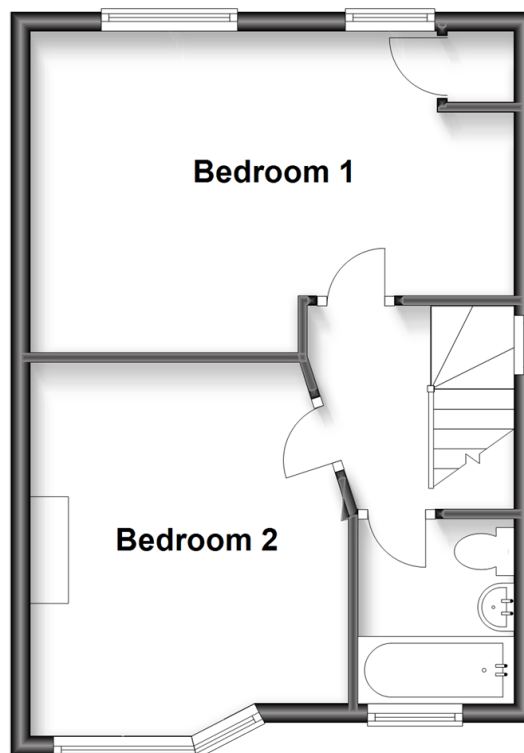
Ground Floor

Approx. 613.9 sq. feet



First Floor

Approx. 390.6 sq. feet



Accommodation

GROUND FLOOR

Entrance Porch

Entrance Hall

Lounge/Diner: 24'11 x 10'0 (7.60m x 3.05m)

Sun Room: 10'0 x 8'0 (3.05m x 2.44m)

Kitchen: 13'0 x 8'0 (3.97m x 2.44m)

Shower Room

FIRST FLOOR

Landing

Bedroom 1: 16'0 x 11'0 (4.88m x 3.36m)

Bedroom 2: 13'0 x 10'11 (3.97m x 3.33m)

Bathroom

OUTSIDE

Front & Rear Gardens

Garage & Driveway



Main features

- Semi-detached house set on plot size of approximately 0.255 acres
- Enormous scope & potential
- Garage & driveway
- Highly desirable location overlooking the valley & chain free



Nearest Schools

Primary Schools: Watringbury C of E Primary 0.5 miles, The Discovery School 1.3 miles, Kings Hill School 1.8 miles

Secondary Schools: The Malling School 2.5 miles, Bower Grove School 2.6 miles, Oakwood Park Grammar School



Transport Information

Train Stations: Watringbury 0.3 miles, Yalding 2.0 miles, East Malling 2.2 miles



Address

Tonbridge Road, Teston, Maidstone, Kent, ME18



Directions

For directions to this property please contact us.



Call Kings Hill Branch 01732 222211 ■ wardsofkent.co.uk



■ Legal advice should be taken to verify fixtures/fittings, planning, alterations and/or lease details ■ Appliances & services are untested, dimensions are approximate and floor plans are not to scale
 ■ Through a Homewise Home For Life Plan people aged 60+ can secure this property for up to 59% less, by purchasing a Lifetime Lease.



13626823/20230928/NR/NR