



Price
£700,000

Freehold

4x  3x  2x 

**The Bentletts, Collier
Street, Yalding,
Maidstone, Kent, ME18**

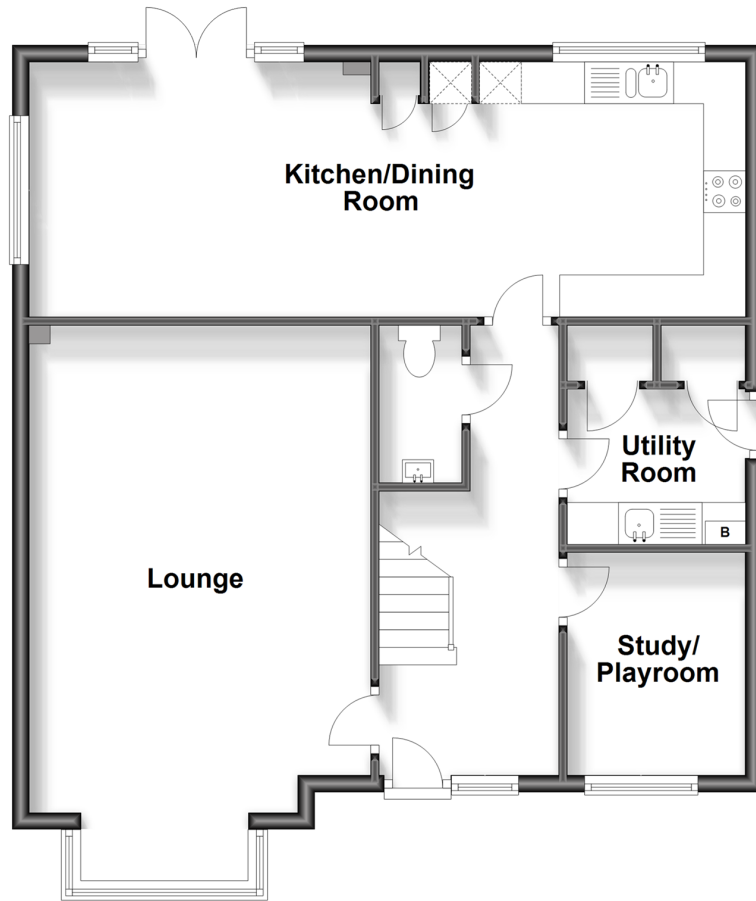
OVER 60?

Secure this property
for up to **59% less!**

Wards
Helping you move forwards

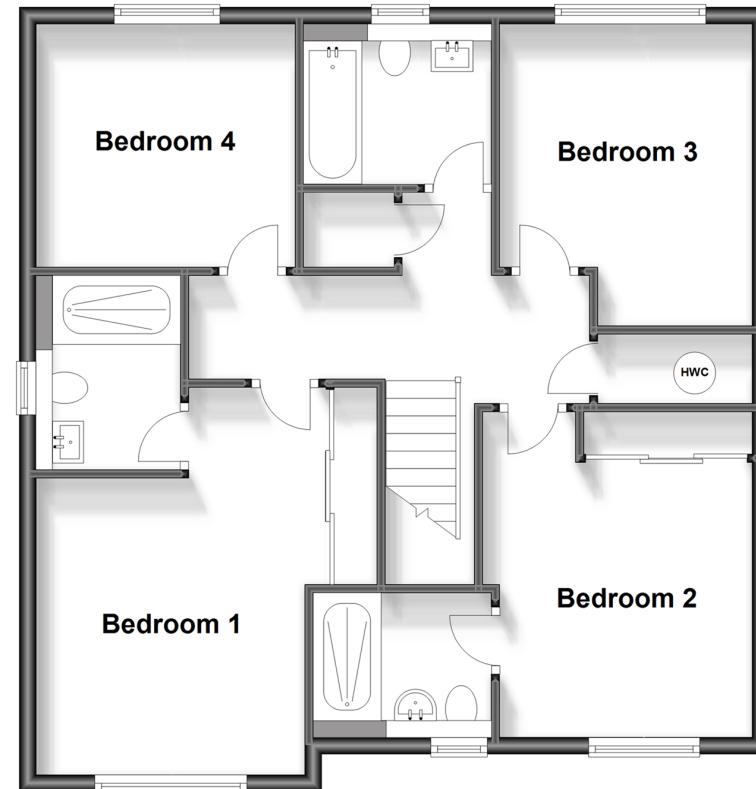
Ground Floor

Approx. 75.3 sq. metres (810.0 sq. feet)



First Floor

Approx. 74.4 sq. metres (801.3 sq. feet)



Accommodation

GROUND FLOOR

Entrance Hall

Kitchen/Dining Room: 28'0 x 10'0
(8.54m x 3.05m)

Utility Room: 6'11 x 6'1 (2.11m x 1.86m)

Study/Playroom: 8'8 x 7'0 (2.64m x 2.14m)

Lounge: 21'3 x 13'2 (6.48m x 4.02m)

FIRST FLOOR

Landing

Bedroom 1: 15'1 x 12'3 (4.60m x 3.74m)

En suite Shower Bedroom 1

Bedroom 2: 12'6 (3.81m) x 10'6 (3.20m)
narrowing to 9'8 (2.95m)

En suite Shower Bedroom 2: 7'3 x 4'11
(2.21m x 1.50m)

Bedroom 3: 11'10 (3.61m) narrowing to
9'6 (2.90m) x 9'10 (3.00m)

Bedroom 4: 10'3 x 9'6 (3.13m x 2.90m)

Bathroom: 7'2 x 5'6 (2.19m x 1.68m)

OUTSIDE

Off Road Parking

Garden



Main features

- Spacious and well presented detached property
- Stunning views to the rear with nature trails nearby
- Large private rear garden
- Situated in a quiet cul-de-sac
- Double garage and off road parking



Nearest Schools

Primary Schools: St Margaret's, Collier Street C of E Voluntary Controlled School 0.9 miles, Laddingford St Mary's C of E Voluntary Controlled Primary 1.0 miles, Hunton C of E Primary 1.6 miles



Transport Information

Train Stations: Beltring 1.6 miles, Yalding 2.1 miles, Paddock Wood 2.3 miles



Address

The Bentletts, Collier Street, Yalding, Maidstone, Kent, ME18



Directions

For directions to this property please contact us.



Wards
Helping you move forwards

Call Paddock Wood Branch 01892 836877 ■ wardsofkent.co.uk



- Legal advice should be taken to verify fixtures/fittings, planning, alterations and/or lease details
- Appliances & services are untested, dimensions are approximate and floor plans are not to scale
- Through a Homewise Home For Life Plan people aged 60+ can secure this property for up to 59% less, by purchasing a Lifetime Lease.



13626824/20231026/TT/GD