



Price

£800,000

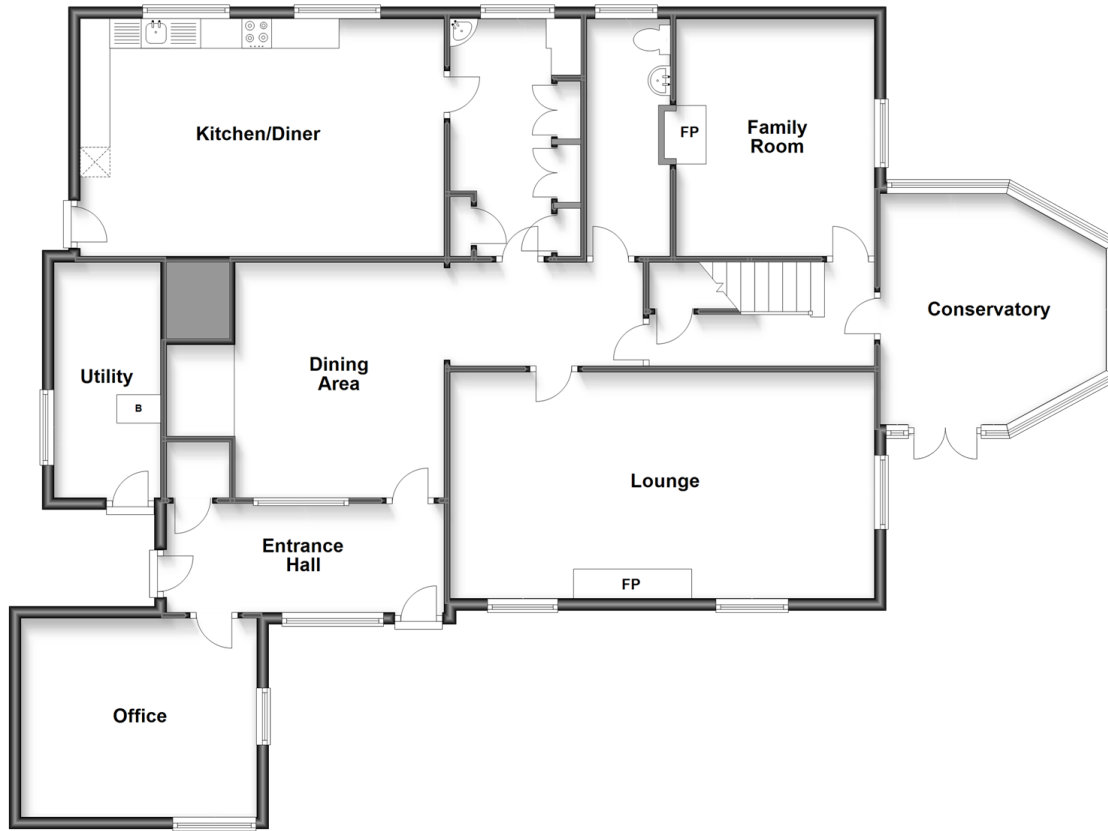
Freehold

4x  3x  4x 

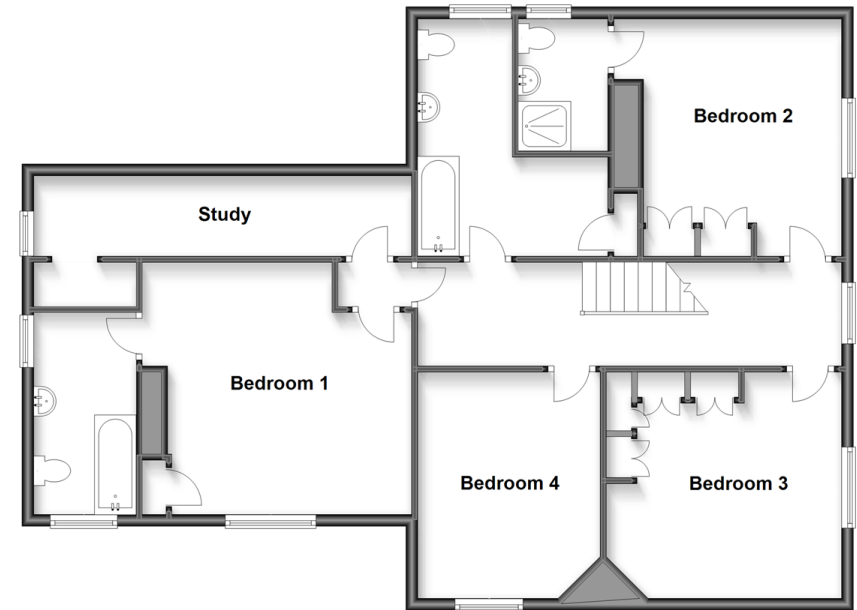
Den Lane, Collier Street, Kent, TN12

Wards
Helping you move forwards

Ground Floor
Approx. 157.9 sq. metres (1699.8 sq. feet)



First Floor
Approx. 106.8 sq. metres (1149.1 sq. feet)



Accommodation

GROUND FLOOR

Entrance Hall: 14'0 x 6'2 (4.27m x 1.88m)
Lounge: 23'4 (7.12m) x 12'3 (3.74m) narrowing to 11'6 (3.51m)
Kitchen: 20'1 x 13'2 (6.13m x 4.02m)
Pantry: 13'6 x 7'0 (4.12m x 2.14m)
Dining Room: 13'0 x 11'3 (3.97m x 3.43m)
Snug: 13'2 x 10'10 (4.02m x 3.30m)
Study: 13'0 x 11'0 (3.97m x 3.36m)

Conservatory: 13'0 x 12'5 (3.97m x 3.79m)
Downstairs Cloakroom
Boot/Utility Room

FIRST FLOOR

Landing
Bedroom 1: 13'5 x 12'8 (4.09m x 3.86m)
Dressing Room: 20'0 x 4'5 (6.10m x 1.35m)
En suite Bedroom 1: 11'2 x 5'8 (3.41m x 1.73m)

Bedroom 2: 13'3 x 10'10 (4.04m x 3.30m)
En suite Bedroom 2: 7'4 x 4'11 (2.24m x 1.50m)
Bedroom 3: 13'1 x 12'3 (3.99m x 3.74m)
Bedroom 4: 12'5 x 9'10 (3.79m x 3.00m)
Family Bathroom: 13'0 x 10'3 (3.97m x 3.13m) narrowing to 5'8 x 5'1 (1.73m x 1.55m)

OUTSIDE

Large Rear Garden
Swimming Pool
Tennis Court
Garage/Outbuilding: 35'0 x 15'0 (10.68m x 4.58m)
Workshop



Main features

- **Gorgeous Unlisted Period Farmhouse set in gardens of approximately 1.43Acres**
- **Swimming Pool and Tennis Court (to upgrade)**
- **Large and charming outbuilding used as garage, smaller outbuilding as workshop**
- **We have been advised that the titles will need be spilt and are subject to a land survey mapping out the relevant boundaries**



Nearest Schools

Primary Schools: St Margaret's, Collier Street C of E School 0.6 miles, Hunton C of E Primary 1.1 miles, Secondary Schools: Linton Park School 3.4 miles, Cornwallis Academy 3.5 miles, Mascalls School 3.6 miles. Grammar Schools in Maidstone, Tonbridge and T/Wells.



Transport Information

Train Stations: Beltring 2.3 miles, Yalding 2.3 miles, Marden 2.7 miles



Address

Den Lane, Collier Street, Kent, TN12



Directions

For directions to this property please contact us.



Wards
Helping you move forwards

Call Paddock Wood Branch 01892 836877 ■ wardsofkent.co.uk



- If buying to let, the energy rating will need to be improved to at least 'E' rating before you can let the property
- Appliances & services are untested, dimensions are approximate and floor plans are not to scale

■ Legal advice should be taken to verify fixtures/fittings, planning, alterations and/or lease details



13626833/20240130/GD/GW