

OVER 60?

Secure this property
for up to **59% less!**



Price

£550,000

Freehold

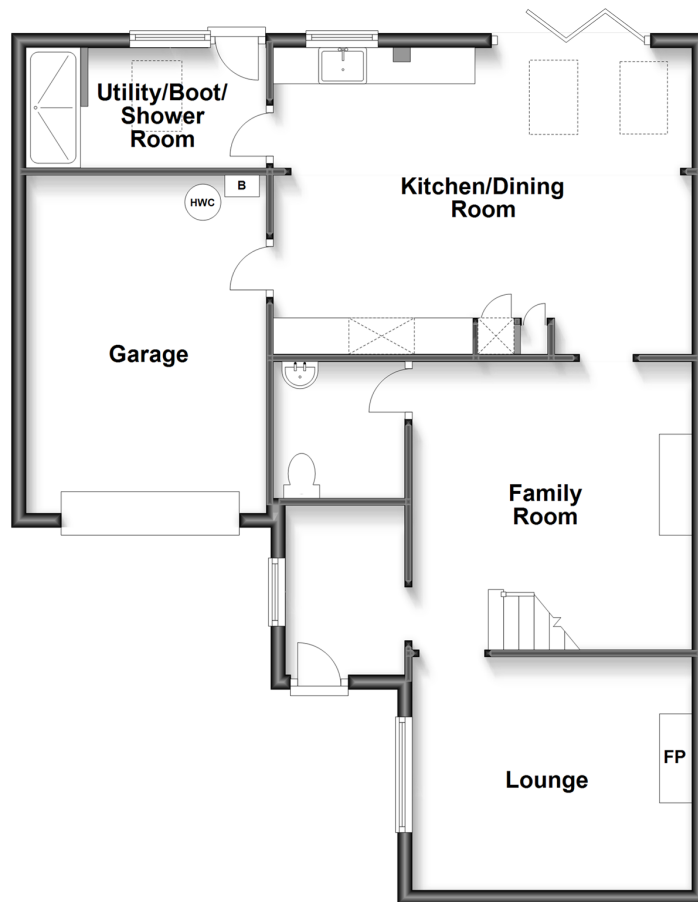
3x  3x  2x 

Vicarage Road, Yalding, Maidstone, Kent,
ME18

Wards
Helping you move forwards

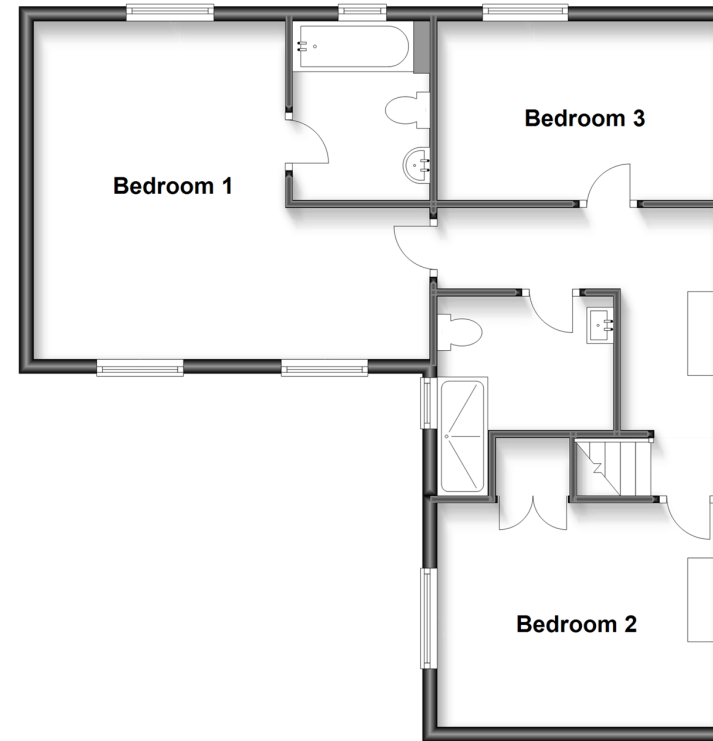
Ground Floor

Approx. 83.5 sq. metres (898.3 sq. feet)



First Floor

Approx. 64.4 sq. metres (693.6 sq. feet)



Accommodation

GROUND FLOOR

Entrance Hall: 7'6 x 5'7 (2.29m x 1.70m)

Kitchen/Dining Room: 19'0 x 14'5 (5.80m x 4.40m)

Utility/Boot/Shower Room: 11'0 x 5'6 (3.36m x 1.68m)

Cloakroom

Family Room: 13'0 x 12'9 (3.97m x 3.89m)
narrowing to 10'4 x 11'6 (3.15m x 3.51m)

Lounge: 12'8 x 10'7 (3.86m x 3.23m)
narrowing to 11'6 x 10'2 (3.51m x 3.10m)

FIRST FLOOR

Landing

Bedroom 1: 18'0 x 16'3 (5.49m x 4.96m)
narrowing to 11'2 x 7'4 (3.41m x 2.24m)

Ensuite Bedroom 1: 8'3 x 6'5 (2.52m x 1.96m)

Bedroom 2: 12'9 (3.89m) narrowing to 11'7 (3.53m) x 10'1 (3.08m)

Bedroom 3: 12'10 x 8'4 (3.91m x 2.54m)

Shower Room: 8'10 (2.69m) x 8'0 (2.44m)
narrowing to 6'3 (1.91m)

OUTSIDE

Garage: 15'3 x 10'10 (4.65m x 3.30m)

Driveway & Off Road parking

Rear Garden

Home Office



Main features

- A very rare find; a gorgeous period home with excellent space both upstairs and down
- Central Village location plus good parking AND integral single garage plus Home Office
- Lovely rear garden with sunny aspect
- Stunning extended kitchen/dining room with utility/boot/shower room adjacent
- Three double bedrooms including Large main bedroom with en-suite bathroom



Nearest Schools

Primary Schools: Yalding, St Peter and St Paul Primary Sch 0.1 miles, Hunton C of E Primary 1.2 miles, Laddingford Primary 1.6 miles Secondary Schools: Bower Grove 3.7 miles, Cornwallis Academy, 3.7 miles, Linton Park 3.7 miles. Maidstone and Tonbridge Grammars



Transport Information

Train Stations: Yalding 0.6 miles, Watlington 2.0 miles, Beltring 2.1 miles



Address

Vicarage Road, Yalding, Maidstone, Kent, ME18



Directions

For directions to this property please contact us.



Wards
Helping you move forwards

Call Paddock Wood Branch 01892 836877 ■ wardsofkent.co.uk



- Legal advice should be taken to verify fixtures/fittings, planning, alterations and/or lease details
- Appliances & services are untested, dimensions are approximate and floor plans are not to scale
- Through a Homewise Home For Life Plan people aged 60+ can secure this property for up to 59% less, by purchasing a Lifetime Lease.



13626841/20230626/JT/GW