



OVER 60?

Secure this property
for up to **59% less!**

Price

£400,000

Freehold

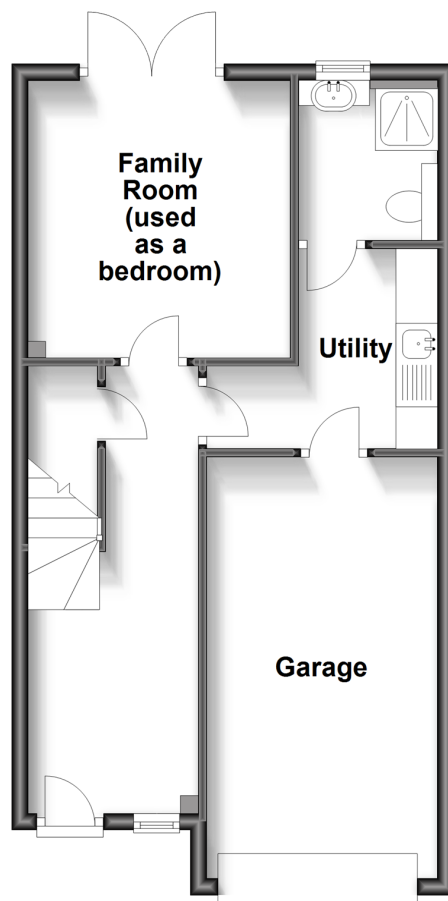
3x  3x  2x 

**Olivers Court,
Horsmonden,
Tonbridge, Kent, TN12**

Wards
Helping you move forwards

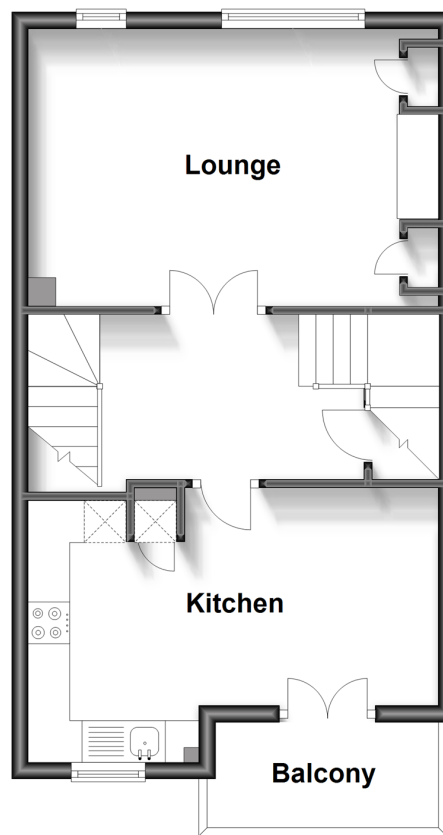
Ground Floor

Approx. 45.4 sq. metres (489.2 sq. feet)



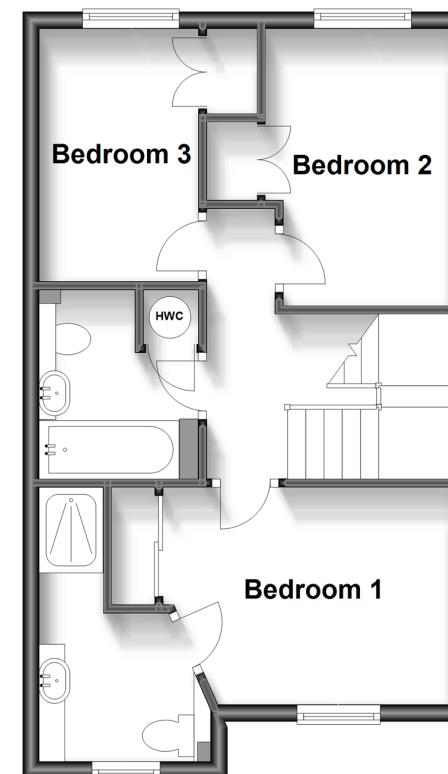
First Floor

Approx. 41.3 sq. metres (444.8 sq. feet)



Second Floor

Approx. 41.3 sq. metres (444.9 sq. feet)



Accommodation

GROUND FLOOR

Entrance Hall

Family Room : 10'5 x 10'0 (3.18m x 3.05m)

Utility Room: 7'10 x 5'6 (2.39m x 1.68m)

FIRST FLOOR

Lounge: 16'2 x 10'10 (4.93m x 3.30m)

Kitchen: 16'2 (4.93m) x 10'3 (3.13m)
narrowing to 8'6 (2.59m)

SECOND FLOOR

Landing

Bedroom 1: 11'3 x 8'7 (3.43m x 2.62m)

En suite Bedroom 1: 10'10 x 6'7 (3.30m x 2.01m)

Bedroom 2: 10'1 x 6'3 (3.08m x 1.91m)

Bedroom 3: 11'0 (3.36m) x 7'6 (2.29m)
narrowing to 6'6 (1.98m)

Bathroom: 10'0 x 6'3 (3.05m x 1.91m)

OUTSIDE

Garage

Rear Garden



Main features

- A spacious middle Town House in this exclusive small development with its own communal field
- Very popular village with well thought of amenities and great community spirit
- Charming kitchen/diner with balcony
- Elegant Sitting room overlooks private garden
- Family room suitable as a home office/bedroom



Nearest Schools

Primary Schools: Horsmonden Primary 0.4 miles, Goudhurst and Kildown C of E Primary 2.0 miles, Brenchley and Matfield C of E Voluntary Aided Primary 2.2 miles
Secondary Schools: Bethany School 2.1 miles, Mascalls



Transport Information

Train Stations: Paddock Wood 3.8 miles, Marden 3.8 miles, Beltring 5.0 miles



Address

Olivers Court, Horsmonden, Tonbridge, Kent, TN12



Directions

For directions to this property please contact us.



Wards
Helping you move forwards

Call Paddock Wood Branch 01892 836877 ■ wardsofkent.co.uk



■ Legal advice should be taken to verify fixtures/fittings, planning, alterations and/or lease details ■ Appliances & services are untested, dimensions are approximate and floor plans are not to scale
■ Through a Homewise Home For Life Plan people aged 60+ can secure this property for up to 59% less, by purchasing a Lifetime Lease.



13626851/20231011/GD/GW