



Price

£270,000

Leasehold

2x  2x  1x 

**Newbridge Park,
Maidstone Road,
Paddock Wood, Kent,
TN12**

Wards
Helping you move forwards



Main features

- Stylish Park home with garden area and 2 parking spaces
- Lounge with feature corner fireplace
- Spacious kitchen/diner with separate utility
- Bedroom 1 with en-suite shower room
- Double guest bedroom and bathroom

Accommodation

GROUND FLOOR

Entrance Hall

Lounge: 15'0 (4.58m) x 14'0 (4.27m)
narrowing to 13'0 (3.97m)

Kitchen/Diner: 19'2 (5.85m) x 10'7 (3.23m)
narrowing to 8'4 (2.54m)

Utility Room: 6'0 x 3'6 (1.83m x 1.07m)

Bedroom 1: 10'8 x 9'0 (3.25m x 2.75m)

En-suite Shower Room: 5'7 x 5'1 (1.70m x 1.55m)

Bedroom 2: 9'4 (2.85m) narrowing to 7'5 (2.26m) x 7'10 (2.39m)

Bathroom: 7'4 x 6'4 (2.24m x 1.93m)

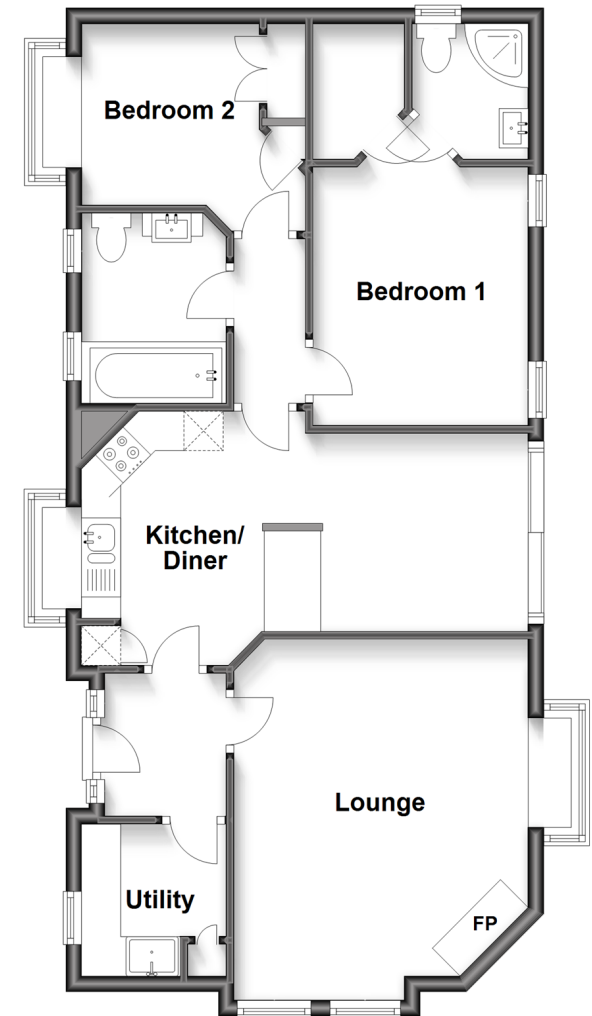
OUTSIDE

Garden Area

2 Parking Spaces

Ground Floor

Approx. 69.4 sq. metres (746.7 sq. feet)



Call Paddock Wood - 01892 836877 ■ wardsofkent.co.uk

- If buying to let, the energy rating will need to be improved to at least 'E' rating before you can let the property
- Legal advice should be taken to verify fixtures/fittings, planning, alterations and/or lease details
- Appliances & services are untested, dimensions are approximate and floor plans are not to scale



13626852/20230327/LF/GW