



Price

£260,000

Leasehold

2x  2x  1x 

**Newbridge Park,
Maidstone Road,
Paddock Wood, Kent,
TN12**

Wards
Helping you move forwards



Main features

- Stylish Park Home with garden area and 2 parking spaces
- Large spacious lounge
- Generous kitchen/diner
- Main bedroom with ensuite shower
- Guest bedroom plus bathroom
- Cash buyers, Park rules apply.

Accommodation

GROUND FLOOR

Entrance Hall

Kitchen/Diner: 18'11 (5.77m) x 12'3 (3.74m) narrowing to 9'4 (2.85m)

Lounge: 18'11 (5.77m) x 18'1 (5.52m) narrowing to 11'0 (3.36m)

Bedroom 1: 9'2 x 8'10 (2.80m x 2.69m)

Dressing Area

En suite Shower Room: 6'0 x 5'6 (1.83m x 1.68m)

Bedroom 2: 9'1 x 9'0 (2.77m x 2.75m)

Bathroom: 6'2 x 5'7 (1.88m x 1.70m)

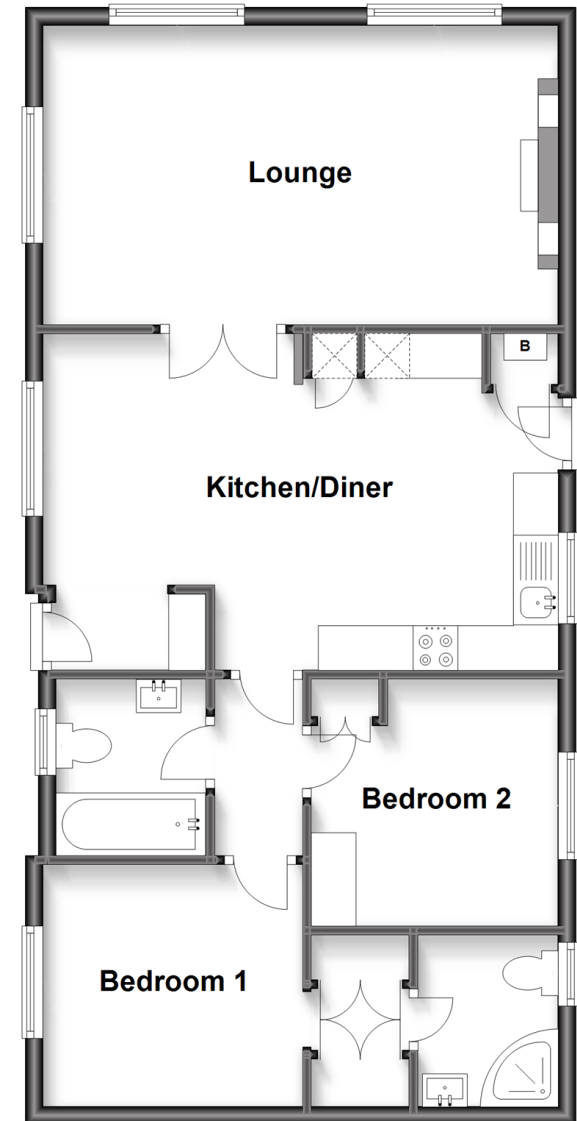
OUTSIDE

Garden

2 Parking Spaces

Ground Floor

Approx. 69.1 sq. metres (743.4 sq. feet)



Call Paddock Wood - 01892 836877 ■ wardsofkent.co.uk

- If buying to let, the energy rating will need to be improved to at least 'E' rating before you can let the property
- Legal advice should be taken to verify fixtures/fittings, planning, alterations and/or lease details
- Appliances & services are untested, dimensions are approximate and floor plans are not to scale



13626853/20230320/LF/GW