



**Price**

**£280,000**

**Leasehold**

2x  2x  1x 

**Newbridge Park,  
Maidstone Road,  
Paddock Wood, Kent,  
TN12**

*Wards*  
Helping you move forwards





## Main features

- Superb Park home with garden area and 2 parking spaces
- Great space with large lounge and generous kitchen/diner
- Private study and separate utility room
- Main bedroom with ensuite shower
- Guest double and bathroom
- Cash buyers. Park rules apply.

## Accommodation

### GROUND FLOOR

#### Entrance Hall

Lounge: 13'10 (4.22m) narrowing to 12'6 (3.81m) x 13'4 (4.07m)

Kitchen/Diner: 18'10 (5.74m) x 11'7 (3.53m) narrowing to 7'9 (2.36m)

Utility Room: 6'1 x 5'0 (1.86m x 1.53m)

Study: 5'10 x 5'0 (1.78m x 1.53m)

Bedroom 1: 12'7 x 9'1 (3.84m x 2.77m)

En suite Shower Room: 9'1 x 5'3 (2.77m x 1.60m)

Bathroom: 6'6 x 5'11 (1.98m x 1.80m)

Bedroom 2: 9'11 x 9'3 (3.02m x 2.82m)

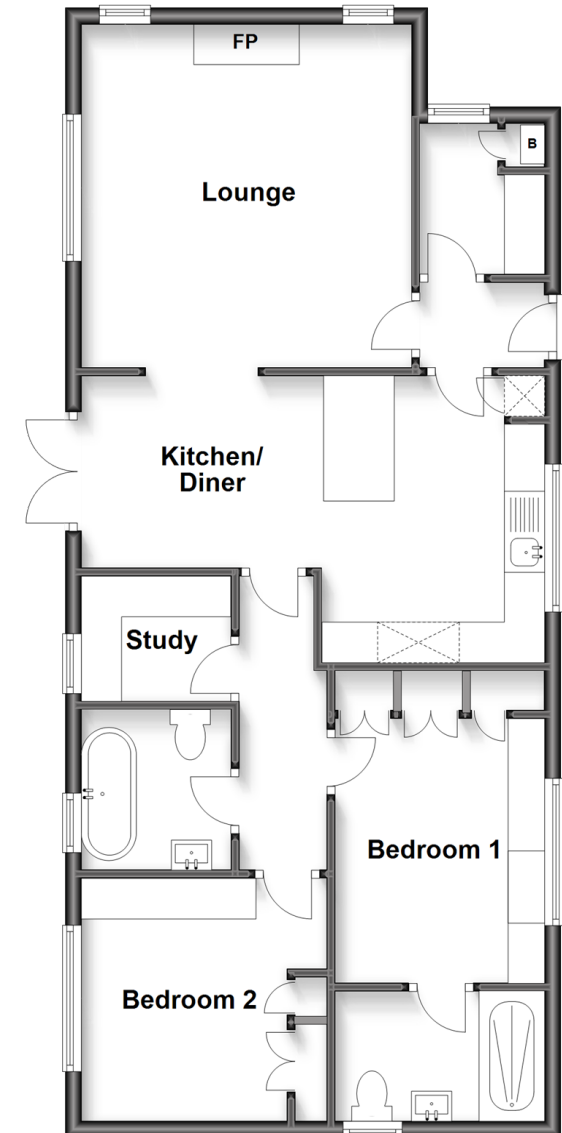
### OUTSIDE

#### Garden Area

2 Parking Spaces

## Ground Floor

Approx. 75.7 sq. metres (814.7 sq. feet)



**Call Paddock Wood - 01892 836877 ■ [wardsofkent.co.uk](http://wardsofkent.co.uk)**

- If buying to let, the energy rating will need to be improved to at least 'E' rating before you can let the property
- Legal advice should be taken to verify fixtures/fittings, planning, alterations and/or lease details
- Appliances & services are untested, dimensions are approximate and floor plans are not to scale



13626854/20230320/LF/GW