



Price

£450,000

Freehold

3x  1x  2x 

**Bow Road,
Waterringbury,
Maidstone, Kent, ME18**

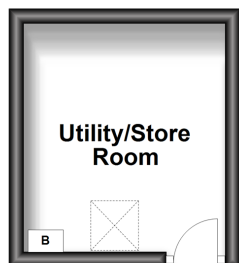
OVER 60?

Secure this property
for up to **59% less!**

Wards
Helping you move forwards

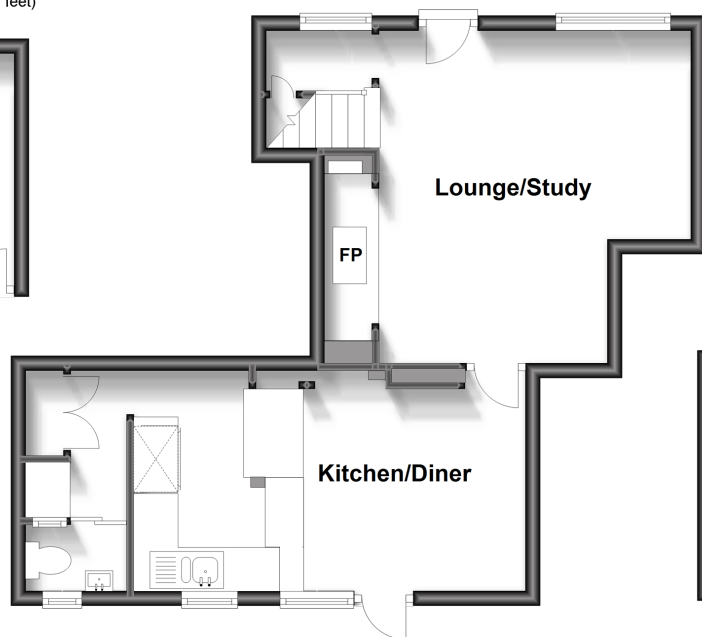
Lower Ground Floor

Approx. 8.4 sq. metres (90.9 sq. feet)



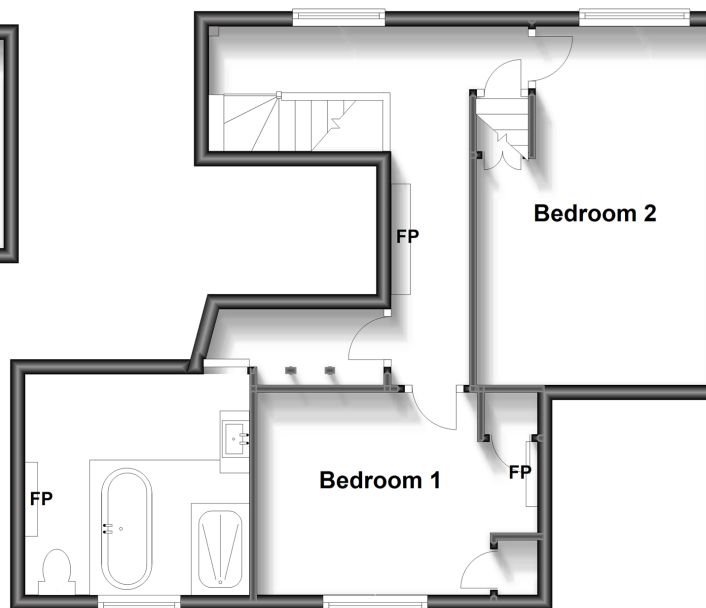
Split Level Ground Floor

Approx. 42.6 sq. metres (458.1 sq. feet)



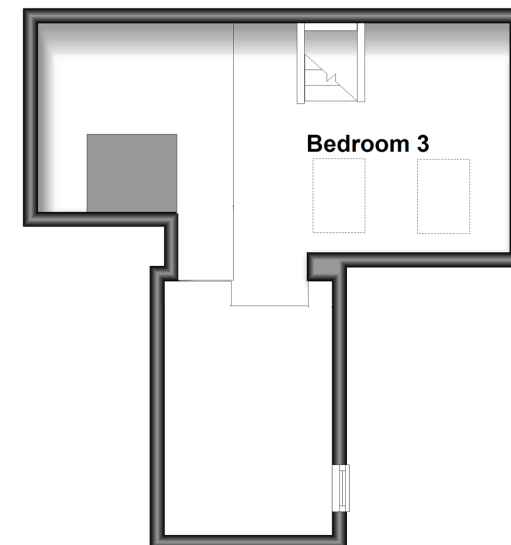
First Floor

Approx. 47.6 sq. metres (511.9 sq. feet)



Second Floor

Approx. 27.7 sq. metres (297.8 sq. feet)



Accommodation

LOWER GROUND FLOOR

Utility/Store Room

GROUND FLOOR

Lounge/Study: 14'9 (4.50m) x 14'0 (4.27m) narrowing to 10'4 (3.15m)

Kitchen/Diner: 17'6 x 10'5 (5.34m x 3.18m)

Cloakroom

FIRST FLOOR

Landing

Bedroom 1: 14'9 (4.50m) x 10'2 (3.10m) narrowing to 7'8 (2.34m)

Bedroom 2: 13'4 x 9'8 (4.07m x 2.95m)

Bathroom: 10'1 x 10'0 (3.08m x 3.05m)

SECOND FLOOR

Bedroom 3: 14'9 (4.50m) x 10'1 (3.08m) narrowing to 5'0 (1.53m)

OUTSIDE

Driveway

Front & Rear Gardens



Main features

- A stunning period home full of character and features such as Inglenook and cast iron fireplaces and exposed timbers
- Beautiful gardens in several 'rooms' bordering a stream and open countryside
- Stylish boutique Bathroom
- Three gorgeous bedrooms
- Parking for two; close to station and village centre



Nearest Schools

Primary Schools: Watringbury C of E Primary 0.2 miles, The Discovery School 1.4 miles, Kings Hill School 1.6 miles
Secondary Schools: The Malling School 2.8 miles, Bower Grove School 3.3 miles, Grange Park School 3.6 miles, Maidstone Grammar schools



Transport Information

Train Stations: Watringbury 0.4 miles, Yalding 1.6 miles, East Farleigh 3.0 miles



Address

Bow Road, Watringbury, Maidstone, Kent, ME18



Directions

For directions to this property please contact us.



Call Paddock Wood Branch 01892 836877 ■ wardsofkent.co.uk



- Flying freehold affects part of this property, please contact us before proceeding
- Appliances & services are untested, dimensions are approximate and floor plans are not to scale

- Legal advice should be taken to verify fixtures/fittings, planning, alterations and/or lease details
- Through a Homewise Home For Life Plan people aged 60+ can secure this property for up to 59% less, by purchasing a Lifetime Lease.



13626894/20231026/TT/GW