



Price

£225,000

Leasehold

2x  1x  1x 

**Anchorage Flats, St.
Andrew's Road,
Paddock Wood,
Tonbridge, Kent, TN12**

Wards
Helping you move forwards



Main features

- Amazing opportunity to own a ground floor flat with superb rear garden and garage
- Excellent location adjoining local park, tucked away and yet close to station, shops, schools
- Living room with doors to garden
- Modern kitchen
- Wet room

Accommodation

GROUND FLOOR

Communal Entrance

Entrance Hall

Lounge/Dining Room: 15'11 (4.85m) x 12'0 (3.66m) narrowing to 10'10 (3.30m)

Kitchen: 11'5 x 9'6 (3.48m x 2.90m)

Bedroom 1: 12'0 x 12'0 (3.66m x 3.66m)

Wet Room: 6'5 x 5'5 (1.96m x 1.65m)

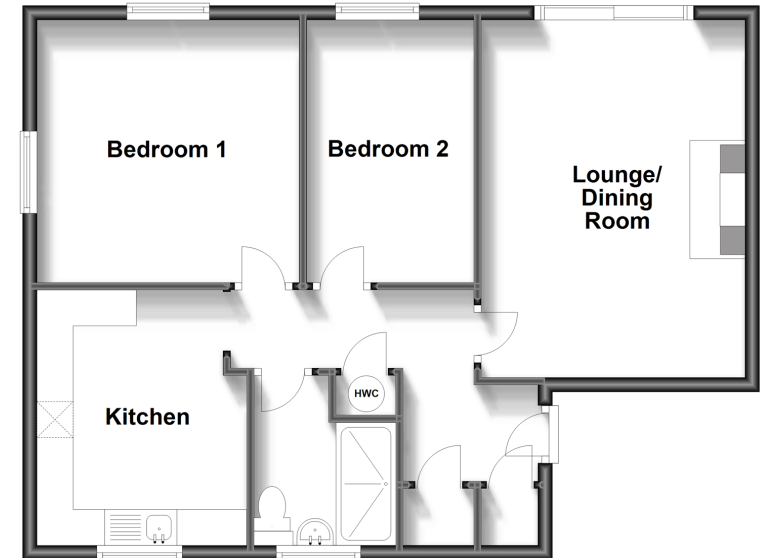
Bedroom 2: 9'10 x 7'6 (3.00m x 2.29m)

OUTSIDE

Private Rear Garden

Garage

Ground Floor
Approx. 66.0 sq. metres (710.2 sq. feet)



Call Paddock Wood - 01892 836877 ■ wardsforkent.co.uk

- Legal advice should be taken to verify fixtures/fittings, planning, alterations and/or lease details
- Appliances & services are untested, dimensions are approximate and floor plans are not to scale