



Price
£230,000

Leasehold

2x  1x  1x 

**Maidstone Road,
Paddock Wood, Kent,
TN12**

Wards
Helping you move forwards



Main features

- Beautifully presented first home or investment opportunity
- Private garden to the rear
- Large living space with space for dining
- Located a short distance from Paddock Wood mainline station with direct links to London
- Close to local amenities

Accommodation

FIRST FLOOR

Entrance Hall

Lounge/Diner: 15'8 (4.78m) x 13'4 (4.07m) narrowing to 12'2 (3.71m)

Kitchen: 9'5 x 8'4 (2.87m x 2.54m)

Bedroom 1: 15'7 x 11'4 (4.75m x 3.46m)

Bedroom 2: 13'8 x 7'0 (4.17m x 2.14m)

Bathroom: 10'9 (3.28m) narrowing to 8'4 (2.54m) x 5'0 (1.53m)

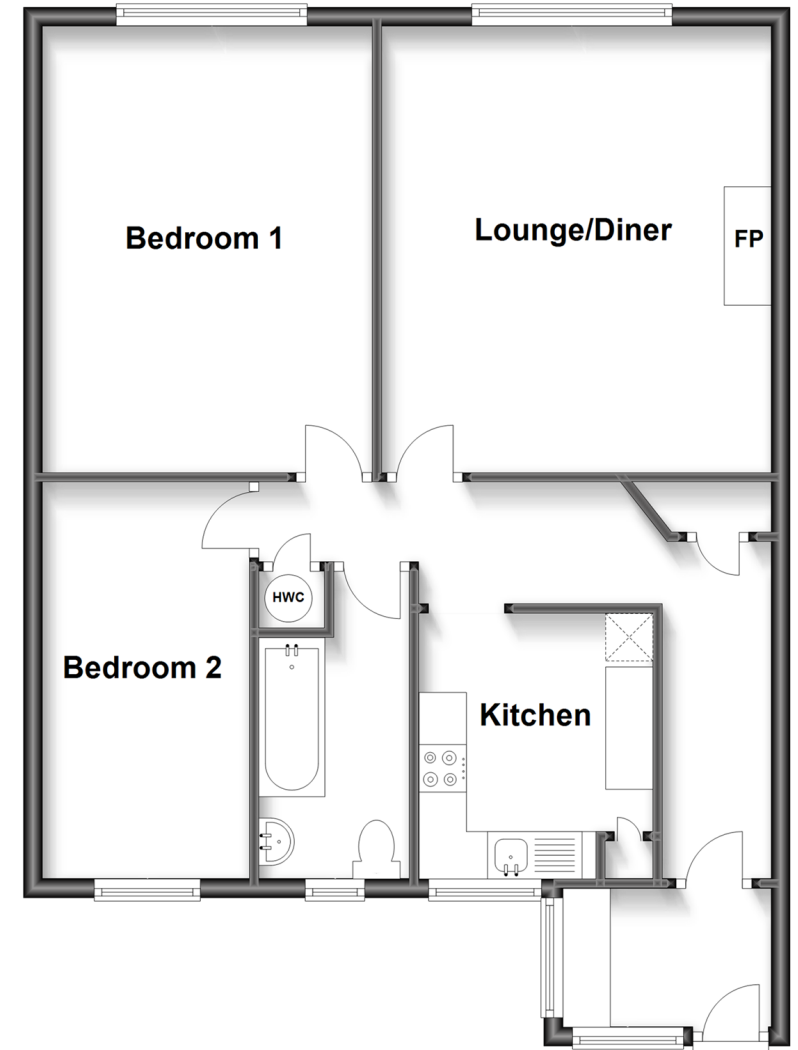
OUTSIDE

Front and Side Gardens

Allocated parking spaces

First Floor

Approx. 72.9 sq. metres (784.7 sq. feet)



Call Paddock Wood - 01892 836877 ■ wardsokent.co.uk

- Legal advice should be taken to verify fixtures/fittings, planning, alterations and/or lease details
- Appliances & services are untested, dimensions are approximate and floor plans are not to scale



13626899/20240423/LF/GD