



Price
£350,000

Freehold

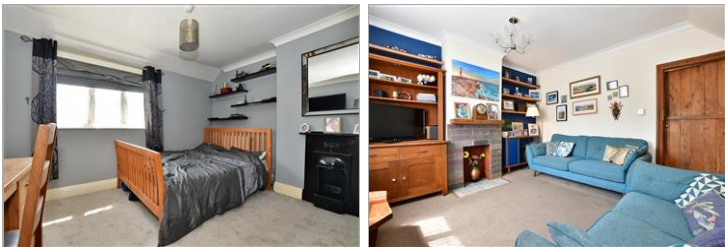
3x  1x  2x 

**Medway Avenue,
Yalding, Maidstone,
Kent, ME18**

OVER 60?

Secure this property
for up to **59% less!**

Wards
Helping you move forwards



Main features

- A charming home with an amazing rear garden with large patio, pond, tree-house
- Rear entertaining area and shed/bar
- Gorgeous modern kitchen/breakfast area
- Superb conservatory
- Air source heat pump

Accommodation

GROUND FLOOR

Entrance Hall

Lounge: 12'7 (3.84m) narrowing to 11'5 (3.48m) x 12'0 (3.66m)

Kitchen/Breakfast Area: 15'10 x 8'10 (4.83m x 2.69m)

Conservatory: 16'2 x 11'0 (4.93m x 3.36m)

FIRST FLOOR

Landing

Bedroom 1: 12'8 x 10'3 (3.86m x 3.13m) narrowing to 11'6 x 9'3 (3.51m x 2.82m)

Bedroom 2: 10'3 x 8'2 (3.13m x 2.49m)

Bedroom 3: 8'3 x 7'7 (2.52m x 2.31m)

Bathroom: 6'6 (1.98m) x 5'2 (1.58m) narrowing to 4'1 (1.25m)

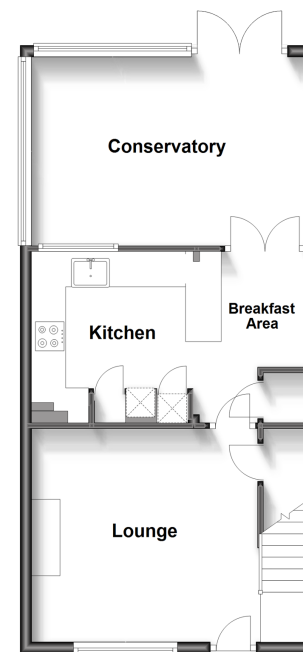
OUTSIDE

Off Road Parking
Large Rear Garden

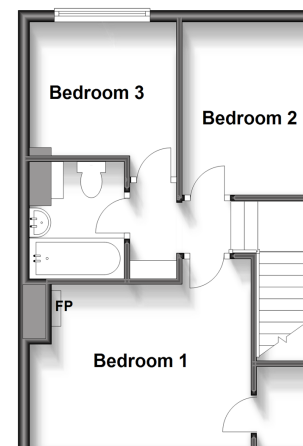
Call Paddock Wood - 01892 836877 ■ wardsofkent.co.uk

- Asbestos is present at this property, please contact us before proceeding
- Legal advice should be taken to verify fixtures/fittings, planning, alterations and/or lease details
- Appliances & services are untested, dimensions are approximate and floor plans are not to scale
- Through a Homewise Home For Life Plan people aged 60+ can secure this property for up to 59% less, by purchasing a Lifetime Lease.

Ground Floor
Approx. 49.0 sq. metres (527.3 sq. feet)



First Floor
Approx. 37.4 sq. metres (402.6 sq. feet)



13626901/20230717/JT/GW