



OVER 60?

Secure this property
for up to **59% less!**

Price

£475,000

Freehold

3x  3x  2x 

**Warden Mill Close,
Watringbury,
Maidstone, Kent, ME18**

Wards
Helping you move forwards



Main features

- A fantastic versatile property within a cul-de-sac location in popular area
- Stunning views over countryside
- Potential to add value
- Garage and off road parking
- A short distance from local amenities and travel links

Accommodation

BASEMENT

Garage

GROUND FLOOR

Entrance Hall

Dining Room: 12'2 x 8'9 (3.71m x 2.67m)

Kitchen/Utility Room: 21'4 x 10'2 (6.51m x 3.10m)

Family/Breakfast Room: 15'3 x 5'2 (4.65m x 1.58m)

Cloakroom

Storage

FIRST FLOOR

Lounge: 18'4 x 10'9 (5.59m x 3.28m)

Bedroom 2: 11'9 x 8'8 (3.58m x 2.64m)

Bedroom 3: 12'5 (3.79m) narrowing to 10'7 (3.23m) x 7'7 (2.31m)

Bathroom

SECOND FLOOR

Bedroom 1: 18'4 (5.59m) x 10'5 (3.18m) narrowing to 8'0 (2.44m)

En suite Bedroom 1

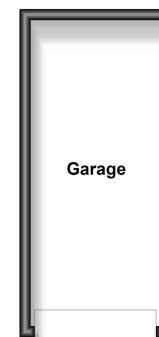
OUTSIDE

Garden

Off Road Parking

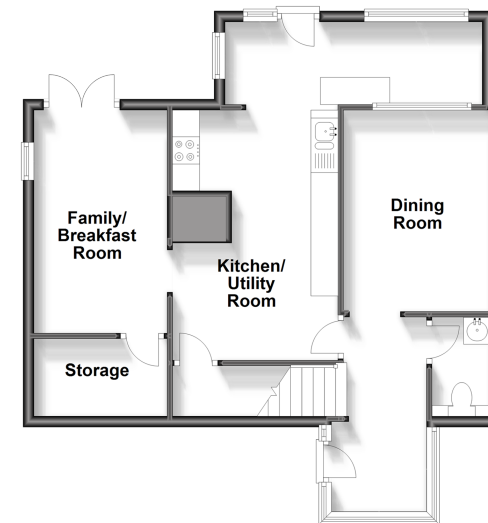
Basement

Approx. 13.9 sq. metres (149.9 sq. feet)



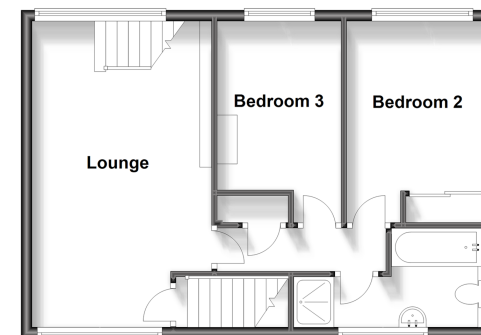
Ground Floor

Approx. 58.0 sq. metres (624.0 sq. feet)



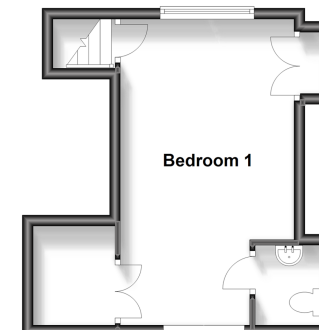
First Floor

Approx. 47.2 sq. metres (507.6 sq. feet)



Second Floor

Approx. 23.3 sq. metres (250.7 sq. feet)



Call Paddock Wood - 01892 836877 ■ wardsof Kent.co.uk

- Legal advice should be taken to verify fixtures/fittings, planning, alterations and/or lease details
- Appliances & services are untested, dimensions are approximate and floor plans are not to scale
- Through a Homewise Home For Life Plan people aged 60+ can secure this property for up to 59% less, by purchasing a Lifetime Lease.



13626930/20240115/GD/GD