



**OVER 60?**

Secure this property  
for up to **59% less!**

**Price**

**£650,000**

**Freehold**

3x  1x  2x 

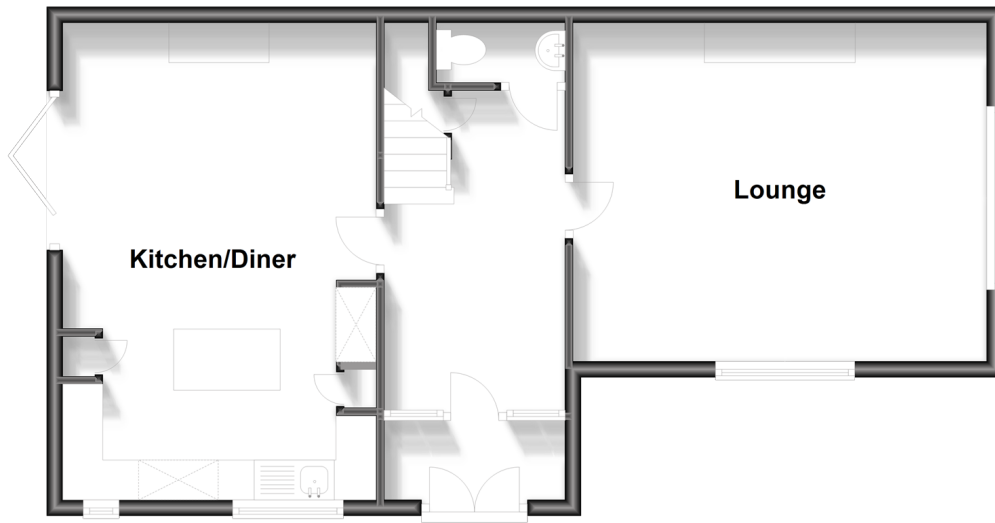
**Bow Road,  
Watlingbury,  
Maidstone, Kent, ME18**

*Wards*  
Helping you move forwards



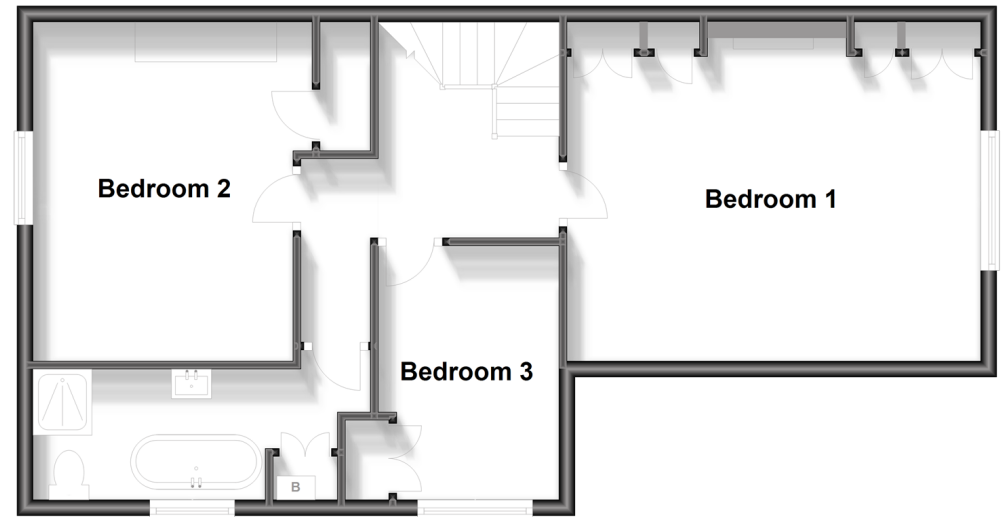
## Ground Floor

Approx. 59.8 sq. metres (643.8 sq. feet)



## First Floor

Approx. 61.6 sq. metres (662.9 sq. feet)



## Accommodation

### GROUND FLOOR

Entrance Hall

Kitchen/Diner: 19'7 (5.97m) x 18'5 (5.62m)  
narrowing to 12'10 (3.91m)

Lounge: 17'1 (5.21m) x 13'10 (4.22m)  
narrowing to 12'9 (3.89m)

### FIRST FLOOR

Landing

Bedroom 1: 17'1 (5.21m) x 13'0 (3.97m)  
narrowing to 12'9 (3.89m)

Bedroom 2: 11'3 x 7'5 (3.43m x 2.26m)

Bedroom 3: 12'8 (3.86m) narrowing to 11'8  
(3.56m) x 10'7 (3.23m)

Bathroom: 12'5 x 6'2 (3.79m x 1.88m)

### OUTSIDE

Off Road Parking

Garden



## Main features

- Substantial portion of a grand Edwardian Village house
- Large rooms with high ceilings
- Beautiful period features
- Gorgeous kitchen/dining room
- Secluded charming private rear garden
- Good parking and garage/gym



## Nearest Schools

Primary Schools: Watringbury C of E Primary 0.3 miles, The Discovery School 1.1 miles, Kings Hill School 1.5 miles

Secondary Schools: The Malling School 2.4 miles, Bower Grove School 2.9 miles, Grange Park School 3.3 miles

## Transport Information

Train Stations: Watringbury 0.0 miles, Yalding 2.0 miles, East Farleigh 2.6 miles

## Address

Bow Road, Watringbury, Maidstone, Kent, ME18

## Directions

For directions to this property please contact us.







**Wards**  
Helping you move forwards

Call Paddock Wood Branch 01892 836877 ■ [wardsofkent.co.uk](http://wardsofkent.co.uk)



- Legal advice should be taken to verify fixtures/fittings, planning, alterations and/or lease details
- Appliances & services are untested, dimensions are approximate and floor plans are not to scale
- Through a Homewise Home For Life Plan people aged 60+ can secure this property for up to 59% less, by purchasing a Lifetime Lease.



13626942/20230807/LF/GW