



Guide Price

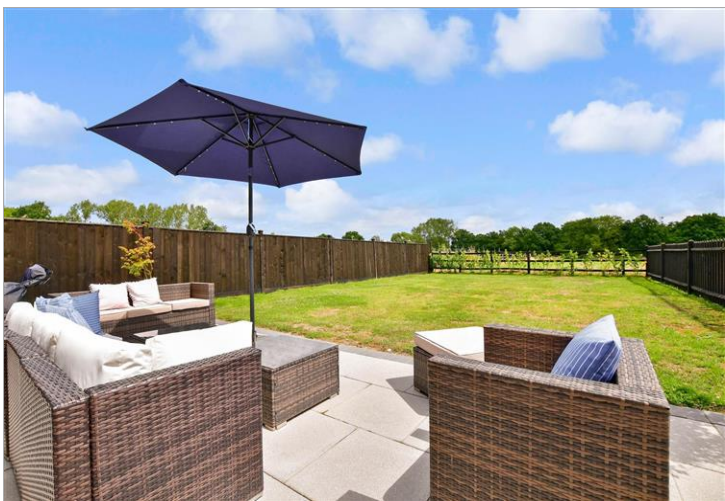
£875,000

Freehold

4x  3x  1x 

**Willow Lane, Paddock
Wood, Tonbridge, Kent,
TN12**

Wards
Helping you move forwards



Main features

- **Stunning semi detached barn conversion**
- **Spacious throughout**
- **Newly built in 2021**
- **Beautiful village location with picturesque countryside views and surroundings**

Accommodation

GROUND FLOOR

Entrance Hall

Lounge: 27'5 x 15'11 (8.36m x 4.85m)

Dining Area: 27'5 x 15'11 (8.36m x 4.85m)

Kitchen Area: 14'7 x 9'7 (4.45m x 2.92m)

Utility : 6'3 x 6'1 (1.91m x 1.86m)

FIRST FLOOR

Landing

Bedroom 1: 15'0 x 11'1 (4.58m x 3.38m)

En suite Shower Bedroom 1

Bedroom 2: 15'10 x 14'11 (4.83m x 4.55m)

Bathroom

Bedroom 3: 15'11 x 12'5 (4.85m x 3.79m)

Bedroom 4: 14'5 x 12'10 (4.40m x 3.91m)

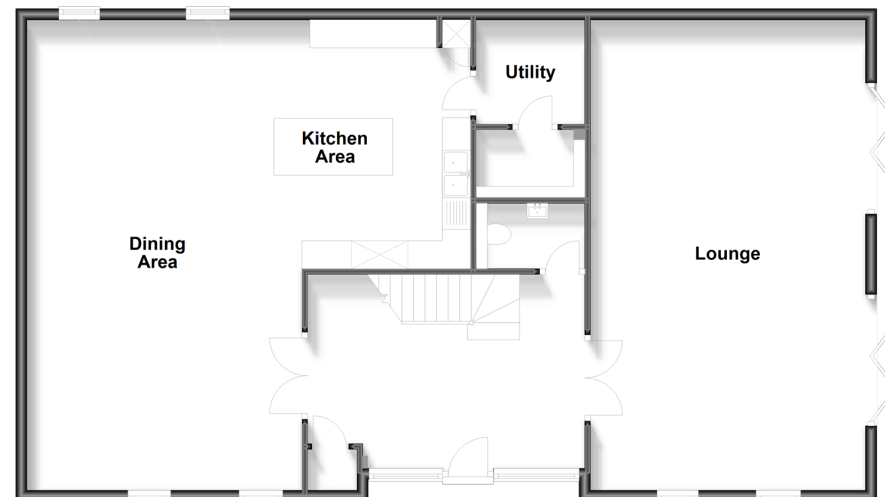
Ensuite Shower Bedroom 4

OUTSIDE

Driveway

Front & Rear Gardens

Ground Floor
Approx. 123.1 sq. metres (1324.8 sq. feet)

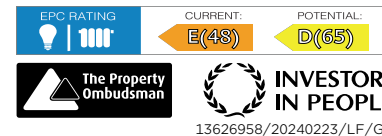


First Floor
Approx. 123.0 sq. metres (1324.0 sq. feet)



Call Paddock Wood - 01892 836877 ■ wardsokent.co.uk

- Legal advice should be taken to verify fixtures/fittings, planning, alterations and/or lease details
- Appliances & services are untested, dimensions are approximate and floor plans are not to scale



13626958/20240223/LF/GD