



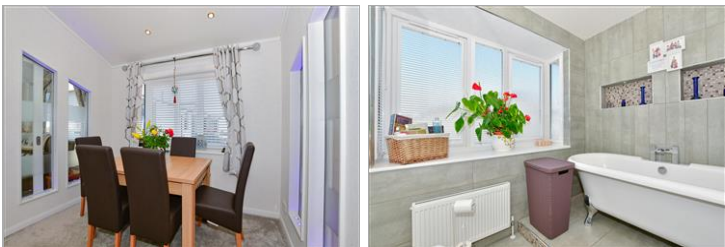
Price

£250,000

2x  2x  2x 

**Five Furlong Country
Park, Queen Street,
Paddock Wood, Kent,
TN12**

Wards
Helping you move forwards



Main features

- Downsize to Luxury with this beautiful Park Home
- Set in rural Paddock Wood with views towards the horses in the Paddock opposite
- 2 private Parking spaces
- Charming manageable garden
- Park rules apply. Cash only.

Accommodation

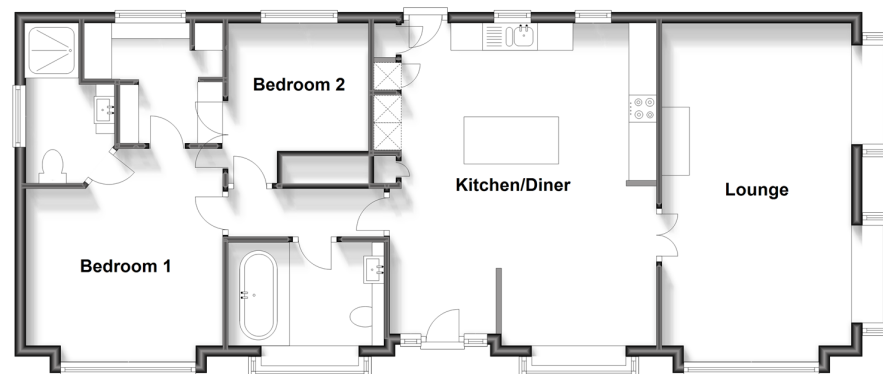
GROUND FLOOR

- Entrance Hall
- Kitchen/Diner: 19'5 x 16'0 (5.92m x 4.88m)
- Lounge: 20'4 x 11'4 (6.20m x 3.46m)
- Bedroom 1: 11'10 (3.61m) x 11'9 (3.58m) narrowing to 9'8 (2.95m)
- En suite Bedroom 1: 9'4 x 5'6 (2.85m x 1.68m)
- Dressing Room: 8'3 x 7'4 (2.52m x 2.24m)
- Bedroom 2: 9'6 x 8'6 (2.90m x 2.59m)
- Bathroom: 8'6 x 6'6 (2.59m x 1.98m)

OUTSIDE

- 2x Parking Spaces
- Garden

Ground Floor
Approx. 91.7 sq. metres (986.9 sq. feet)



Call Paddock Wood - 01892 836877 ■ wardsofkent.co.uk

- This property is not standard construction which could affect mortgage lending, please contact us before proceeding
- If buying to let, the energy rating will need to be improved to at least 'E' rating before you can let the property
- Legal advice should be taken to verify fixtures/fittings, planning, alterations and/or lease details
- Appliances & services are untested, dimensions are approximate and floor plans are not to scale



13626968/20240229/GD/GW