



Guide Price
£600,000

Freehold

3x  1x  2x 

**Back Lane, Horsmonden,
Tonbridge, Kent, TN12**

OVER 60?

Secure this property
for up to **59% less!**

Wards
Helping you move forwards



Main features

- Spacious home with wonderful rear garden
- Fabulous workshop and utility room
- Off road parking
- Excellent location right in the heart of popular village
- Close to primary school, village store, pharmacy, pub and amenities

Accommodation

GROUND FLOOR

Entrance Hall
 Lounge: 18'6 x 13'9 (5.64m x 4.19m)
 Kitchen: 13'1 x 9'5 (3.99m x 2.87m)
 Utility Room: 8'4 x 5'6 (2.54m x 1.68m)
 Dining Room: 12'1 x 11'8 (3.69m x 3.56m)

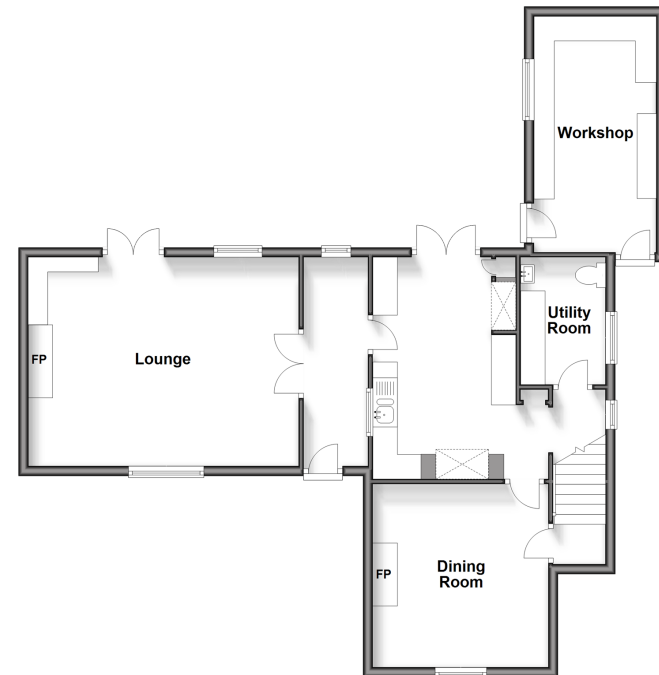
FIRST FLOOR

Landing
 Bedroom 1: 15'3 x 14'8 (4.65m x 4.47m)
 Bedroom 2: 13'0 x 11'9 (3.97m x 3.58m)
 Bedroom 3: 10'6 x 10'0 (3.20m x 3.05m)
 En suite Bedroom 3
 Bathroom

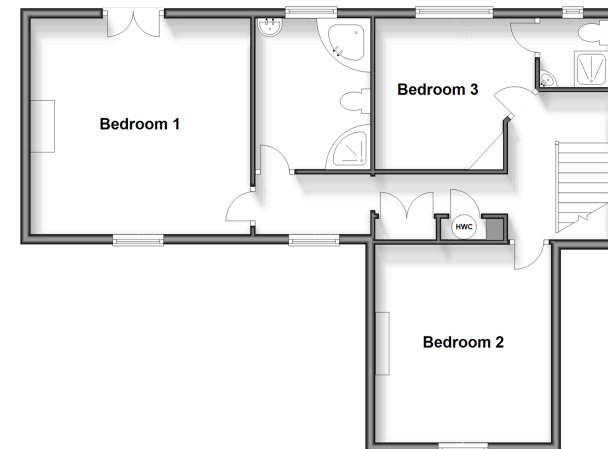
OUTSIDE

Workshop: 15'7 x 7'9 (4.75m x 2.36m)
 Garden
 Driveway

Ground Floor
 Approx. 79.3 sq. metres (854.0 sq. feet)



First Floor
 Approx. 67.4 sq. metres (725.1 sq. feet)



Call Paddock Wood - 01892 836877 ■ wardsof Kent.co.uk

- Legal advice should be taken to verify fixtures/fittings, planning, alterations and/or lease details
- Appliances & services are untested, dimensions are approximate and floor plans are not to scale
- Through a Homewise Home For Life Plan people aged 60+ can secure this property for up to 59% less, by purchasing a Lifetime Lease.