

**OVER 60?**

Secure this property  
for up to **59% less!**



**Guide Price**  
**£500,000**  
**Freehold**

3x  1x  1x 

Furnace Lane, Horsmonden, Tonbridge,  
Kent, TN12

*Wards*  
Helping you move forwards





## Main features

- Charming detached timber framed bungalow with an incredibly homely feel
- Enormous scope for redevelopment or further improvement
- Beautifully secluded plot
- Plentiful parking including garage
- First time to market in 28 Years
- Highly desirable village location and being sold chain free

## Accommodation

### GROUND FLOOR

Entrance Hall

Lounge: 20'0 x 13'3 (6.10m x 4.04m)

Dining Area: 13'3 x 7'11 (4.04m x 2.41m)

Kitchen: 13'7 x 10'11 (4.14m x 3.33m)

Bedroom 1: 15'4 x 11'6 (4.68m x 3.51m)

Bedroom 2: 10'5 x 9'6 (3.18m x 2.90m)

Bedroom 3: 10'9 x 9'7 (3.28m x 2.92m)

Bathroom

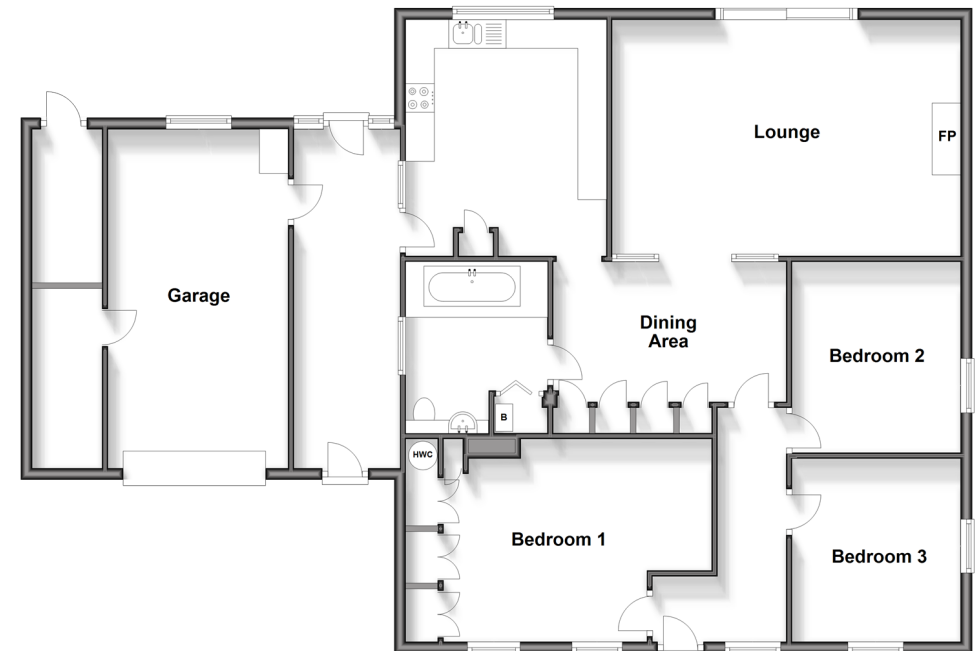
### OUTSIDE

Front & Rear Gardens

Large Driveway

Garage

**Ground Floor**  
Approx. 143.3 sq. metres (1542.3 sq. feet)



**Call Paddock Wood - 01892 836877 ■ [wardsof Kent.co.uk](http://wardsof Kent.co.uk)**

■ Legal advice should be taken to verify fixtures/fittings, planning, alterations and/or lease details  
 ■ Through a Homewise Home For Life Plan people aged 60+ can secure this property for up to 59% less, by purchasing a Lifetime Lease.

■ Appliances & services are untested, dimensions are approximate and floor plans are not to scale



13627030/20240318/LF/NR