



Price
£425,000

Freehold

2x  2x  1x 

**Bow Road,
Waterringbury,
Maidstone, Kent, ME18**

Wards
Helping you move forwards



Main features

- Stunning newly refurbished home in the heart of Watlington
- A stones throw from the train station and local schools
- Spacious rooms incorporating original features
- Off road parking
- Private rear garden

Accommodation

GROUND FLOOR

Entrance Hall

Lounge: 13'3 x 11'3 (4.04m x 3.43m)

Kitchen: 12'1 x 8'3 (3.69m x 2.52m)

Dining Room: 12'0 x 11'8 (3.66m x 3.56m)

Cloakroom

FIRST FLOOR

Landing

Bedroom 1: 12'1 x 10'7 (3.69m x 3.23m)

Bedroom 2: 17'6 x 11'3 (5.34m x 3.43m)

Bathroom: 9'6 x 6'3 (2.90m x 1.91m)

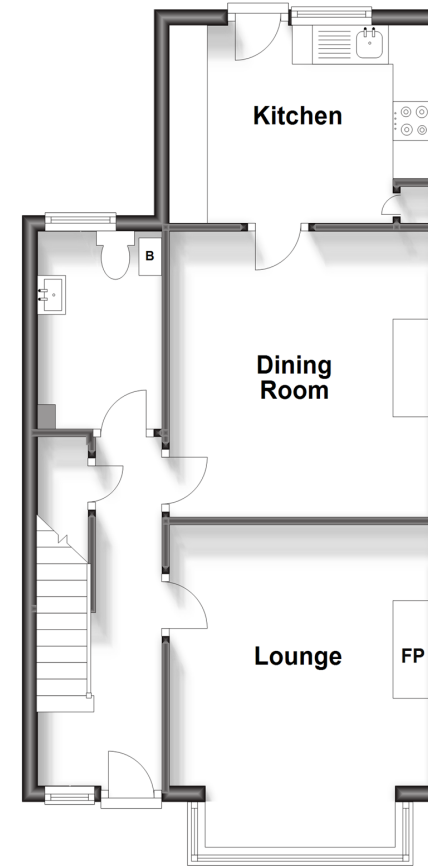
OUTSIDE

Rear Garden

Off Road Parking

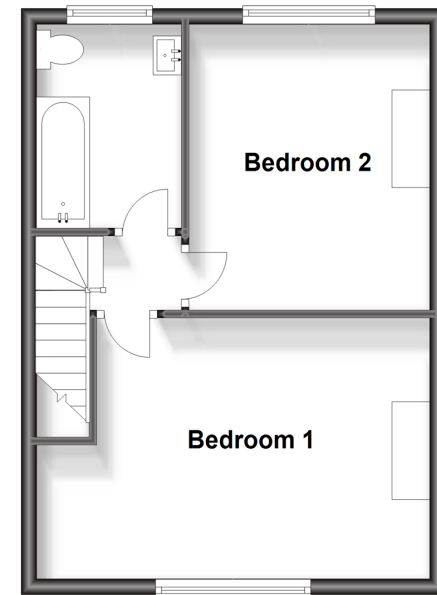
Ground Floor

Approx. 46.9 sq. metres (504.8 sq. feet)



First Floor

Approx. 36.8 sq. metres (396.5 sq. feet)



Call Paddock Wood - 01892 836877 ■ wardsokent.co.uk

- Legal advice should be taken to verify fixtures/fittings, planning, alterations and/or lease details
- Appliances & services are untested, dimensions are approximate and floor plans are not to scale



13627057/20240424/GD/GD