



Price
£450,000

Freehold

3x  2x  1x 

**Bow Road,
Waterringbury,
Maidstone, Kent, ME18**

Wards
Helping you move forwards



Main features

- Stunning new build in the heart of Watlington
- A stones throw from the train station and local schools
- Off road parking
- Bright and spacious open plan kitchen diner
- Private garden with patio to the rear

Accommodation

GROUND FLOOR

Entrance Hall

Lounge: 12'0 x 5'2 (3.66m x 1.58m)

Kitchen/Diner: 21'7 x 19'0 (6.58m x 5.80m)

Cloakroom: 4'6 x 3'0 (1.37m x 0.92m)

FIRST FLOOR

Landing

Bedroom 1: 12'8 x 8'1 (3.86m x 2.47m)

Bedroom 2: 10'9 x 8'8 (3.28m x 2.64m)

Bathroom: 6'1 x 5'8 (1.86m x 1.73m)

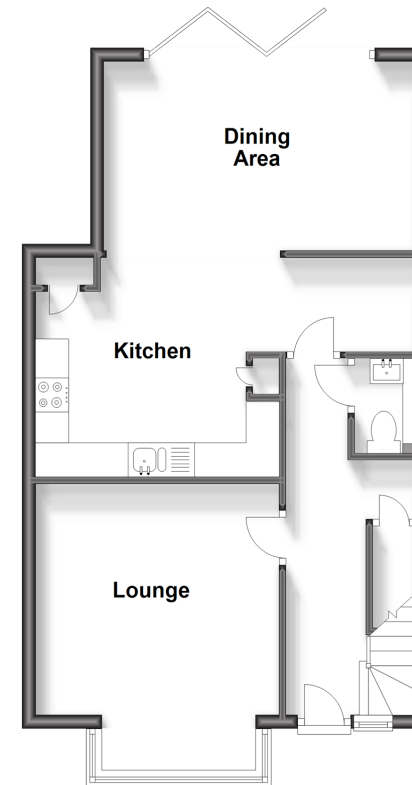
Bedroom 3: 9'6 x 8'4 (2.90m x 2.54m)

OUTSIDE

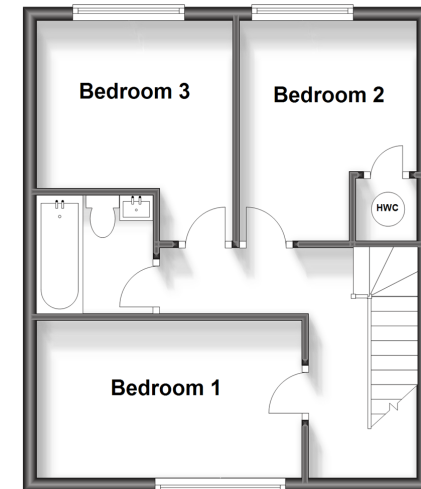
Rear Garden

Off Road Parking

Ground Floor
Approx. 52.9 sq. metres (569.2 sq. feet)



First Floor
Approx. 38.4 sq. metres (413.6 sq. feet)



Call Paddock Wood - 01892 836877 ■ wardsokent.co.uk

- Legal advice should be taken to verify fixtures/fittings, planning, alterations and/or lease details
- Appliances & services are untested, dimensions are approximate and floor plans are not to scale



13627058/20240424/GD/GD