



Price

£450,000

Freehold

3x  2x  1x 

**Bow Road,
Watlington,
Maidstone, Kent, ME18**

Wards
Helping you move forwards



Main features

- Stunning new build in the heart of Watlington
- A stones throw from the train station and local schools
- Off road parking
- Bright and spacious open plan kitchen diner
- Private garden with patio to the rear

Accommodation

GROUND FLOOR

Entrance Hall

Cloakroom: 4'7 x 3'0 (1.40m x 0.92m)

Lounge: 12'0 x 11'4 (3.66m x 3.46m)

Kitchen/Diner: 20'4 x 18'8 (6.20m x 5.69m)

FIRST FLOOR

Landing

Bedroom 1: 13'4 x 7'7 (4.07m x 2.31m)

Bedroom 2: 9'7 x 9'6 (2.92m x 2.90m)

Bedroom 3: 9'0 x 8'9 (2.75m x 2.67m)

Bathroom: 6'5 x 5'8 (1.96m x 1.73m)

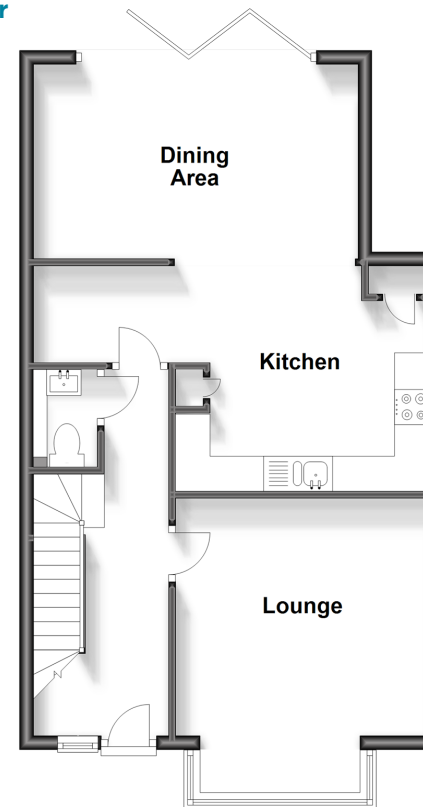
OUTSIDE

Rear Garden

Off Road Parking

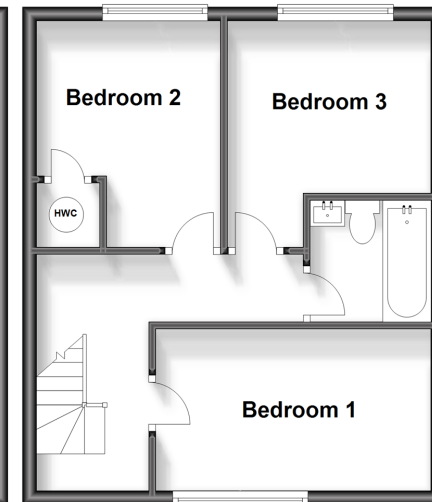
Ground Floor

Approx. 52.9 sq. metres (569.2 sq. feet)



First Floor

Approx. 38.4 sq. metres (413.6 sq. feet)



Call Paddock Wood - 01892 836877 ■ wardsokent.co.uk

- Legal advice should be taken to verify fixtures/fittings, planning, alterations and/or lease details
- Appliances & services are untested, dimensions are approximate and floor plans are not to scale



13627059/20240424/GD/GD