



Price
£325,000

Freehold

2x  1x  1x 

**Bishops Close,
Nettlestead, Maidstone,
Kent, ME18**

OVER 60?

Secure this property
for up to **59% less!**

Wards
Helping you move forwards



Main features

- Spacious living and well presented throughout
- Quiet and secluded garden
- Fantastic conservatory with utility area
- Village location, with Watlington station a short distance away
- Perfect for first time buyers or investors

Accommodation

GROUND FLOOR

Porch

Lounge: 15'5 x 12'4 (4.70m x 3.76m)

Kitchen: 15'7 x 12'4 (4.75m x 3.76m)

Conservatory: 15'5 x 6'11 (4.70m x 2.11m)

FIRST FLOOR

Landing

Bedroom 1: 13'1 x 8'10 (3.99m x 2.69m)

Bedroom 2: 15'7 x 8'10 (4.75m x 2.69m)

Bathroom: 8'2 x 5'8 (2.49m x 1.73m)

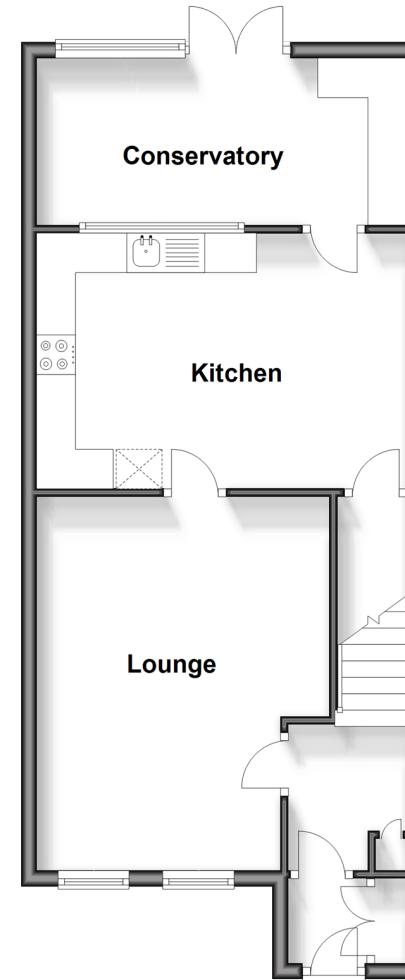
OUTSIDE

Rear Garden

Off Road Parking

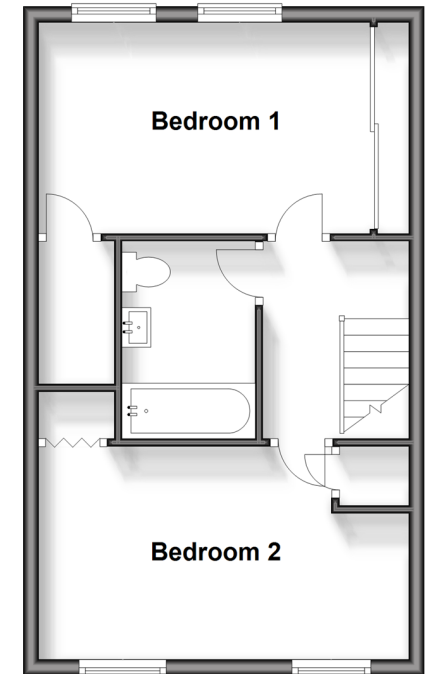
Ground Floor

Approx. 50.5 sq. metres (543.7 sq. feet)



First Floor

Approx. 38.7 sq. metres (416.1 sq. feet)



Call Paddock Wood - 01892 836877 ■ wardsofkennt.co.uk

- Legal advice should be taken to verify fixtures/fittings, planning, alterations and/or lease details
- Appliances & services are untested, dimensions are approximate and floor plans are not to scale
- Through a Homewise Home For Life Plan people aged 60+ can secure this property for up to 59% less, by purchasing a Lifetime Lease.



13627090/20240316/LF/GD