



**Price**  
**£350,000**

**Freehold**

3x  1x  1x 

**Cleavesland,  
Laddingford, Maidstone,  
Kent, ME18**

**OVER 60?**

Secure this property  
for up to **59% less!**

*Wards*  
Helping you move forwards





## Main features

- Beautifully refurbished to a high standard throughout
- Ample off road parking and side access
- Private garden to the rear
- Close to the local school, train station, and bus routes
- Chain free

## Accommodation

### GROUND FLOOR

Entrance Hall

Lounge: 20'6 x 10'9 (6.25m x 3.28m)

Kitchen: 17'3 x 9'9 (5.26m x 2.97m)

### FIRST FLOOR

Landing

Bedroom 1: 11'1 x 10'6 (3.38m x 3.20m)

Bedroom 2: 9'8 x 8'5 (2.95m x 2.57m)

Bedroom 3: 11'2 x 6'9 (3.41m x 2.06m)

Bathroom: 7'9 x 5'4 (2.36m x 1.63m)

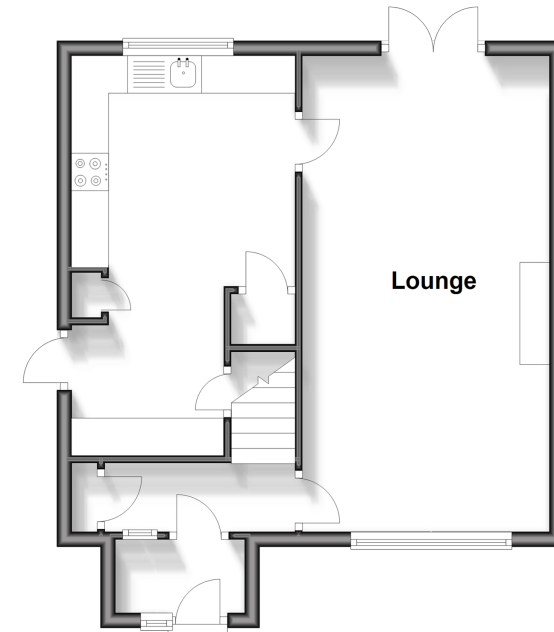
### OUTSIDE

Garden

Driveway

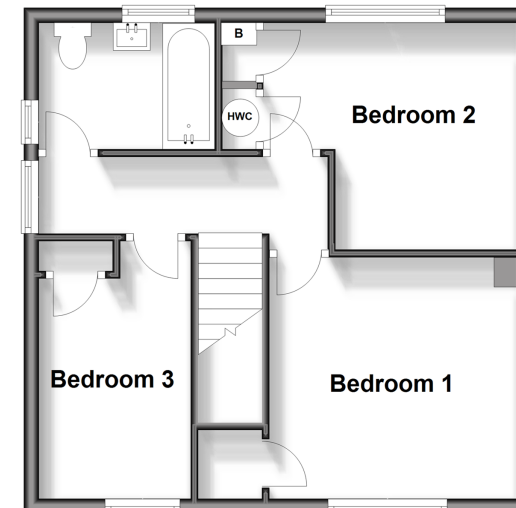
### Ground Floor

Approx. 42.9 sq. metres (461.3 sq. feet)



### First Floor

Approx. 41.2 sq. metres (443.1 sq. feet)



**Call Paddock Wood - 01892 836877 ■ [wardsof Kent.co.uk](http://wardsof Kent.co.uk)**

- Legal advice should be taken to verify fixtures/fittings, planning, alterations and/or lease details
- Appliances & services are untested, dimensions are approximate and floor plans are not to scale
- Through a Homewise Home For Life Plan people aged 60+ can secure this property for up to 59% less, by purchasing a Lifetime Lease.



13627107/20240418/JW/GD