



OVER 60?

Secure this property
for up to **59% less!**

Price
£350,000

Freehold

2x  1x  1x 

**Maidstone Road,
Paddock Wood, Kent,
TN12**

Wards
Helping you move forwards



Main features

- Spacious open plan living area with large separate kitchen
- Beautifully renovated throughout
- Large bathroom with walk in shower and separate bath
- A short walk to Paddock Wood station with direct links to London
- Close to local amenities

Accommodation

GROUND FLOOR

Entrance Hall

Kitchen: 14'6 x 10'8 (4.42m x 3.25m)

Lounge/Diner: 21'9 x 12'1 (6.63m x 3.69m)

FIRST FLOOR

Landing

Bedroom 1: 12'0 x 10'9 (3.66m x 3.28m)

Bathroom

SECOND FLOOR

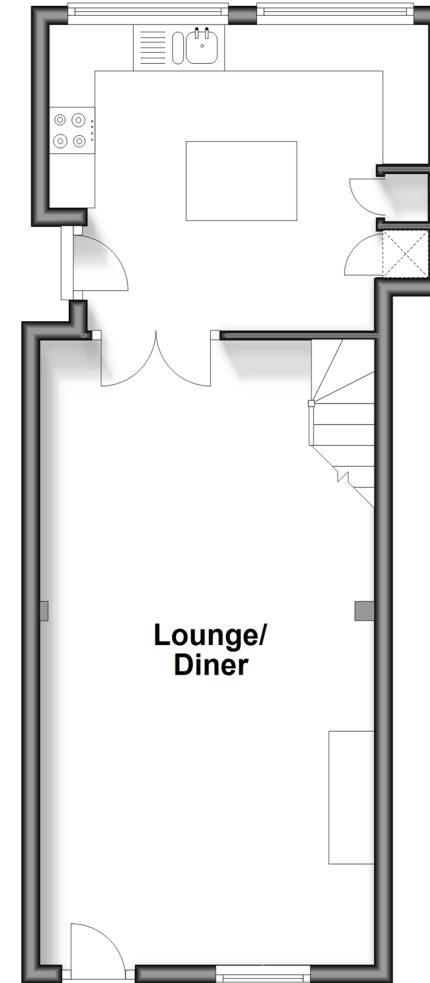
Bedroom 2: 15'1 x 10'8 (4.60m x 3.25m)

OUTSIDE

Rear Garden

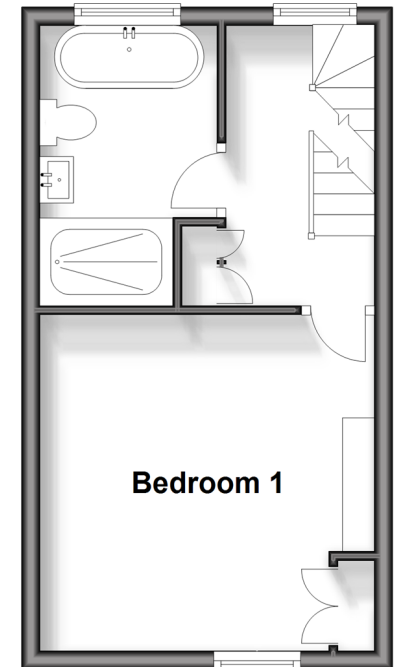
Ground Floor

Approx. 37.9 sq. metres (408.2 sq. feet)



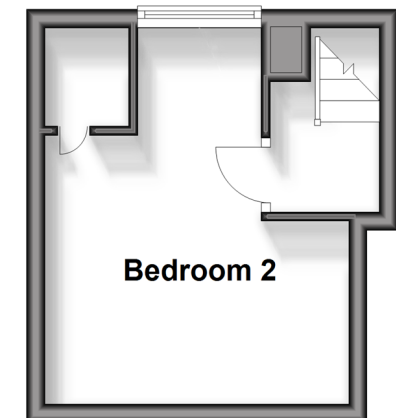
First Floor

Approx. 24.8 sq. metres (266.6 sq. feet)



Second Floor

Approx. 14.2 sq. metres (153.1 sq. feet)



Call Paddock Wood - 01892 836877 ■ wardsofkent.co.uk

- Legal advice should be taken to verify fixtures/fittings, planning, alterations and/or lease details
- Appliances & services are untested, dimensions are approximate and floor plans are not to scale
- Through a Homewise Home For Life Plan people aged 60+ can secure this property for up to 59% less, by purchasing a Lifetime Lease.



13627127/20240417/LF/GD