



OVER 60?

Secure this property
for up to **59% less!**

Price

£200,000

Leasehold

2x  1x  1x 

**Maidstone Road,
Paddock Wood,
Tonbridge, Kent, TN12**

Wards
Helping you move forwards



Main features

- **Spacious maisonette with private rear garden**
- **A short distance from local amenities and mainline train station**
- **Private entrance to the rear**
- **Situated in the heart of Paddock Wood village**
- **Modern kitchen with ample storage**

Accommodation

FIRST FLOOR

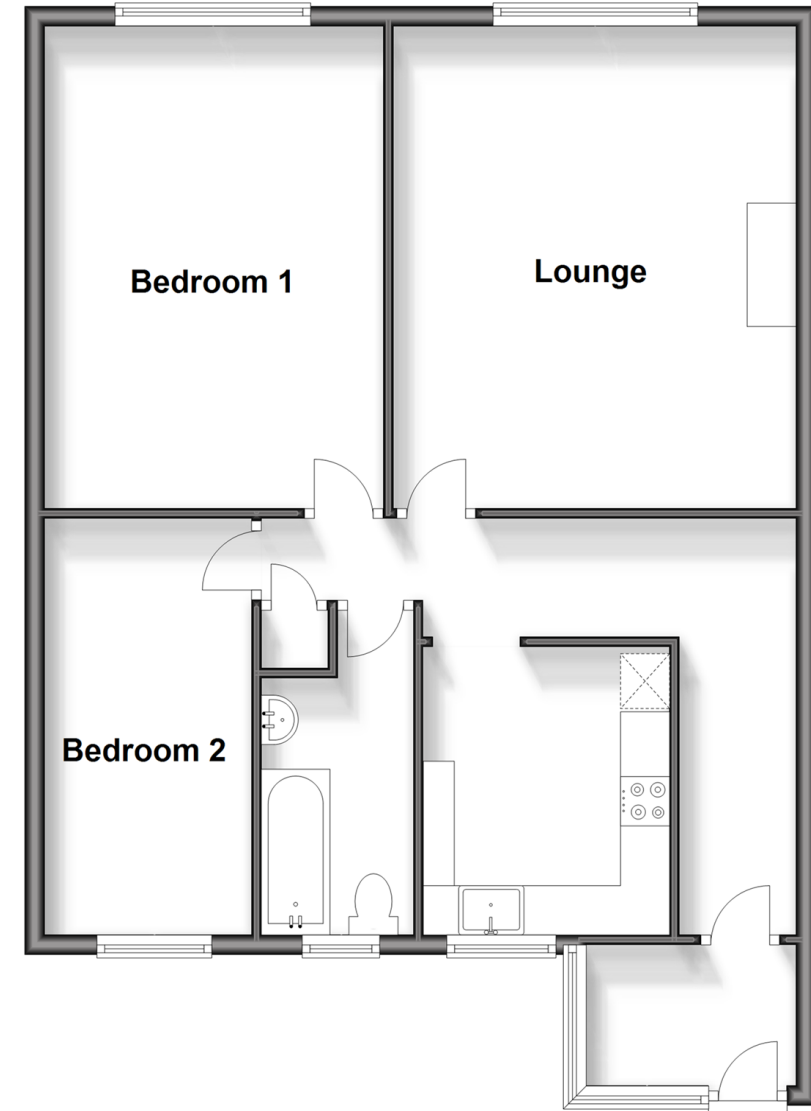
Entrance Hall
 Bedroom 1: 15'9 x 11'2 (4.80m x 3.41m)
 Lounge: 16'0 x 13'5 (4.88m x 4.09m)
 Bedroom 2: 13'8 x 7'0 (4.17m x 2.14m)
 Kitchen: 9'5 x 8'1 (2.87m x 2.47m)
 Bathroom

OUTSIDE

Garden

First Floor

Approx. 73.8 sq. metres (794.6 sq. feet)



Call Paddock Wood - 01892 836877 ■ wardsof Kent.co.uk

- Legal advice should be taken to verify fixtures/fittings, planning, alterations and/or lease details
- Appliances & services are untested, dimensions are approximate and floor plans are not to scale
- Through a Homewise Home For Life Plan people aged 60+ can secure this property for up to 59% less, by purchasing a Lifetime Lease.



13627130/20240419/ST/GD