



Price
£575,000

Freehold

4x  1x  1x 

**Birling Road, Snodland,
Kent, ME6**

OVER 60?

Secure this property
for up to **59% less!**

Wards
Helping you move forwards



Main features

- Breathtaking detached 1930's period home which is immaculate
- Fantastic size and sunny rear garden to enjoy in the warmer weather
- A kitchen/diner that really offers that wow factor
- Handy utility room - perfect for families
- Lovely size gated driveway

Accommodation

GROUND FLOOR

Entrance Hall

Cloakroom

Utility Room: 7'8 x 6'1 (2.34m x 1.86m)

Lounge: 14'11 x 12'4 (4.55m x 3.76m)

Kitchen/Diner: 19'3 x 11'10 (5.87m x 3.61m)

FIRST FLOOR

Landing

Bedroom 1: 15'0 x 11'4 (4.58m x 3.46m)

Bedroom 2: 11'9 x 10'10 (3.58m x 3.30m)

Bedroom 3: 11'10 x 7'10 (3.61m x 2.39m)

Bedroom 4: 8'11 x 6'4 (2.72m x 1.93m)

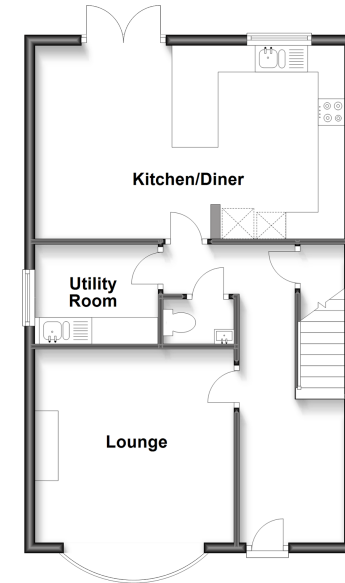
Bathroom

OUTSIDE

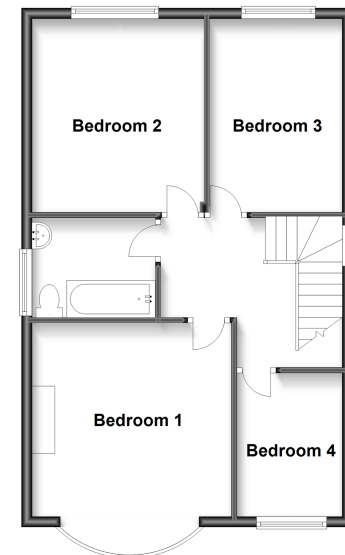
Driveway

Rear Garden

Ground Floor
Approx. 55.5 sq. metres (597.2 sq. feet)



First Floor
Approx. 55.6 sq. metres (598.2 sq. feet)



Call Snodland - 01634 245055 ■ wardsofkent.co.uk

- Legal advice should be taken to verify fixtures/fittings, planning, alterations and/or lease details
- Appliances & services are untested, dimensions are approximate and floor plans are not to scale
- Through a Homewise Home For Life Plan people aged 60+ can secure this property for up to 59% less, by purchasing a Lifetime Lease.



13816020/20230520/CG/LK