



Guide Price
£335,000

Freehold

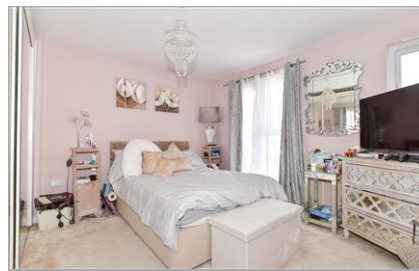
3x  2x  1x 

**Alisander Close,
Holborough Lakes, Kent,
ME6**

OVER 60?

Secure this property
for up to **59% less!**

Wards
Helping you move forwards



Main features

- **Lovely size family home on the gorgeous Holborough Lakes**
- **Handy parking for 2 cars await you after a long day**
- **Peaceful and tucked away cul de sac location**
- **Cloakroom, upstairs family bathroom and en-suite shower room**
- **Great travel links on your doorstep**

Accommodation

GROUND FLOOR

Entrance Hall
Cloakroom
Kitchen: 11'3 x 8'0 (3.43m x 2.44m)
Lounge/Diner: 17'4 x 12'0 (5.29m x 3.66m)
Conservatory: 12'4 x 8'6 (3.76m x 2.59m)

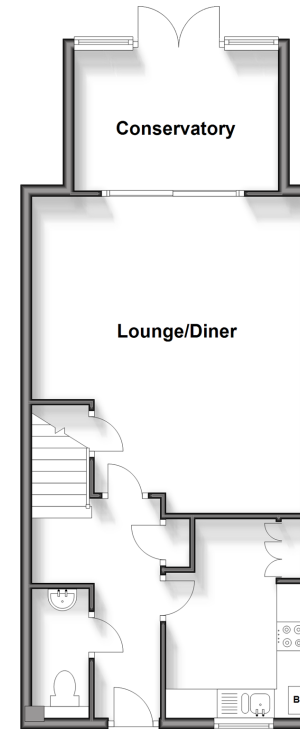
FIRST FLOOR

Landing
Bedroom 1: 12'2 x 9'7 (3.71m x 2.92m)
En-Suite Shower Room
Bedroom 2: 11'9 x 8'1 (3.58m x 2.47m)
Bedroom 3: 8'1 x 7'0 (2.47m x 2.14m)
Bathroom

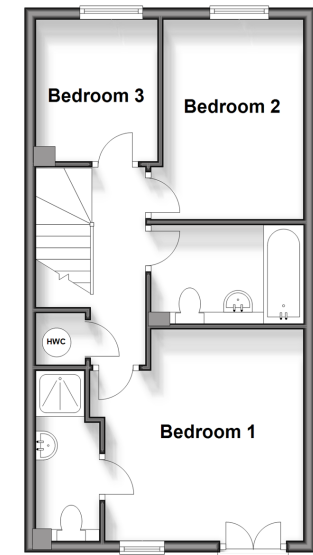
OUTSIDE

Front and Rear Gardens
Allocated Parking Spaces x 2

Ground Floor
Approx. 52.2 sq. metres (561.8 sq. feet)



First Floor
Approx. 42.2 sq. metres (454.8 sq. feet)



Call Snodland - 01634 245055 ■ wardsofKent.co.uk

■ Legal advice should be taken to verify fixtures/fittings, planning, alterations and/or lease details
■ Through a Homewise Home For Life Plan people aged 60+ can secure this property for up to 59% less, by purchasing a Lifetime Lease.

■ Appliances & services are untested, dimensions are approximate and floor plans are not to scale



13819473/20240429/CG/LK