



Price
£500,000

Freehold

4x  2x  2x 

**Low Meadow, Halling,
Rochester, Kent, ME2**

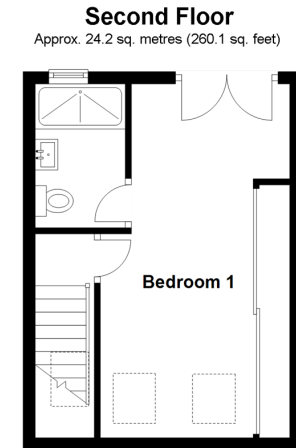
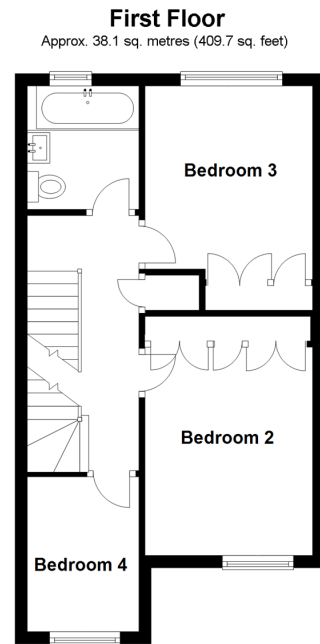
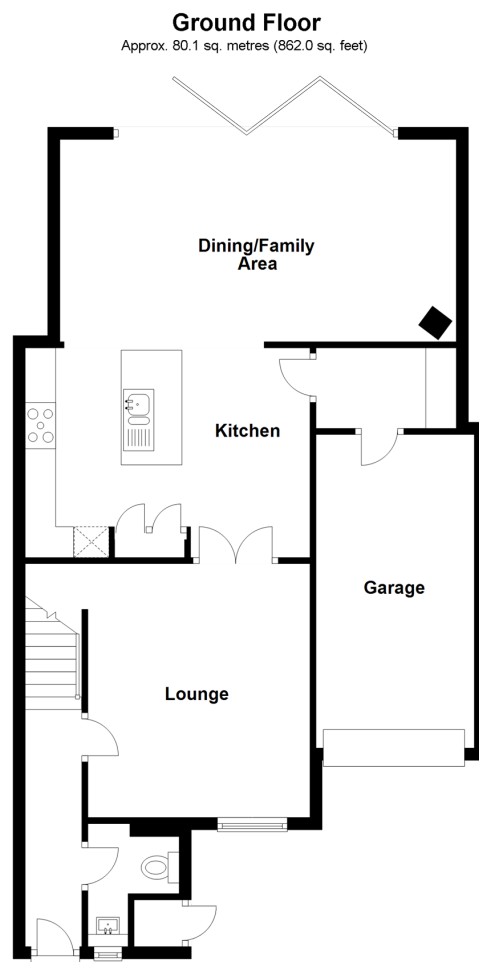
OVER 60?

You could get up to
59% off the price!*



Video Tour available

Wards
Helping you move forwards



Accommodation

GROUND FLOOR

Entrance Hall

Cloakroom

Lounge: 13'6 x 11'11 (4.12m x 3.63m)

Kitchen: 15'3 x 11'1 (4.65m x 3.38m)

Utility Room

Dining/Family Area: 21'11 x 11'5 (6.68m x 3.48m)

FIRST FLOOR

Landing

Bedroom 2: 10'11 x 9'0 (3.33m x 2.75m)

Bedroom 3: 10'1 x 9'0 (3.08m x 2.75m)

Bedroom 4: 8'2 x 5'11 (2.49m x 1.80m)

Bathroom

SECOND FLOOR

Landing

Bedroom 1: 19'0 x 8'11 (5.80m x 2.72m)

En-Suite Shower Room

OUTSIDE

Front and Rear Gardens

Garage and Driveway



Main features

- Truly breathtaking family home in the heart of Halling village
- Stunning entertaining space with log burner which is a must see
- Amazing principle bedroom with ensuite shower room
- Handy utility room so the gorgeous kitchen is perfect for a budding chef
- Garage and ample parking



Nearest Schools

Primary Schools: Halling Primary 0.7 miles, Valley Invicta Primary 1.0 miles, Snodland CofE Primary 2.1 miles

Secondary Schools: Holmesdale Technology College 2.2 miles, Bradfields School 3.4 miles, King's School,



Transport Information

Train Stations: Halling 0.2 miles, Cuxton 2.1 miles, Snodland 2.2 miles



Address

Low Meadow, Halling, Rochester, Kent, ME2



Directions

For directions to this property please contact us.



Wards
Helping you move forwards

Call Snodland Branch 01634 245055 ■ wardsofkent.co.uk



- Legal advice should be taken to verify fixtures/fittings, planning, alterations and/or lease details
- Appliances & services are untested, dimensions are approximate and floor plans are not to scale
- Our Homewise partnership offer a 'Home for Life' plan to buyers over 60, granting a lifetime lease for your protection and reducing the purchase price by up to 59%



13819562/20220423/CG/LK