



**OVER 60?**

Secure this property  
for up to **59% less!**

**Price**  
**£350,000**

**Freehold**

3x  2x  1x 

**Booth Close, Snodland,  
Kent, ME6**

*Wards*  
Helping you move forwards





## Main features

- Situated in a lovely location on the desirable Holborough Lakes
- Pretty rear garden to enjoy
- Bright and airy lounge/diner - perfect for family gatherings
- Handy cloakroom, en-suite shower room and bathroom
- Convenient garage and allocated parking space

## Accommodation

### GROUND FLOOR

Hallway  
Cloakroom  
Kitchen: 11'4 x 8'0 (3.46m x 2.44m)  
Lounge/Diner: 18'0 x 15'6 (5.49m x 4.73m)

### FIRST FLOOR

Landing  
Bedroom 1: 12'2 x 9'7 (3.71m x 2.92m)  
En-Suite Shower Room  
Bedroom 2: 11'10 x 8'3 (3.61m x 2.52m)  
Bedroom 3: 8'4 x 7'1 (2.54m x 2.16m)  
Bathroom

### OUTSIDE

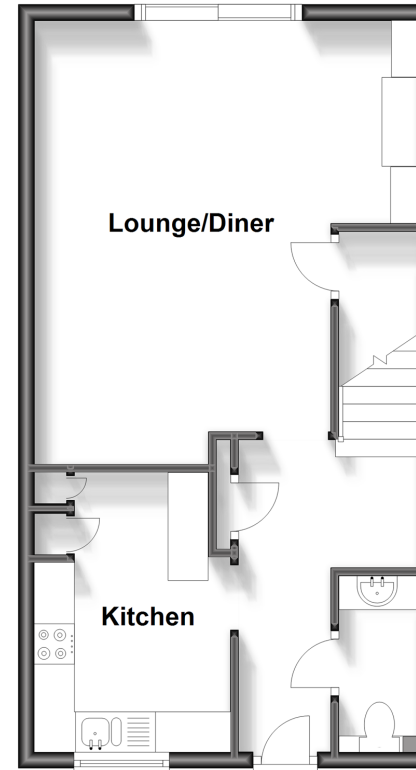
Front and Rear Gardens  
Garage & Allocated Parking

**Call Snodland - 01634 245055 ■ [wardsofkent.co.uk](http://wardsofkent.co.uk)**

- Legal advice should be taken to verify fixtures/fittings, planning, alterations and/or lease details
- Appliances & services are untested, dimensions are approximate and floor plans are not to scale
- Through a Homewise Home For Life Plan people aged 60+ can secure this property for up to 59% less, by purchasing a Lifetime Lease.

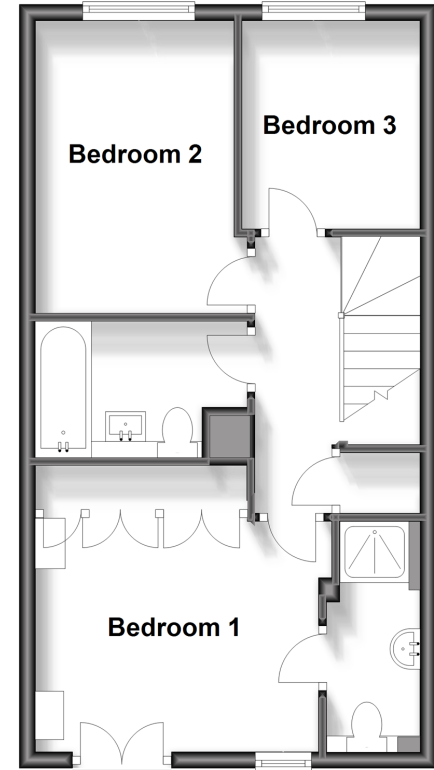
### Ground Floor

Approx. 44.3 sq. metres (477.3 sq. feet)



### First Floor

Approx. 44.2 sq. metres (475.5 sq. feet)



13819648/20240510/MM/LK