



Price
£375,000

Freehold

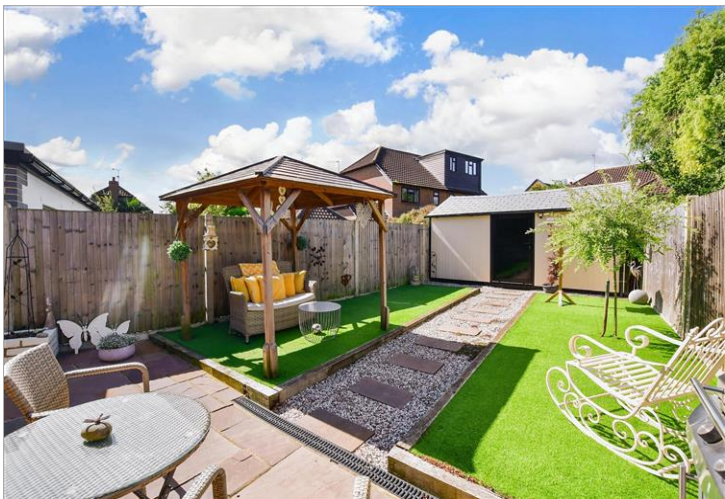
2x  1x  1x 

**Low Meadow, Halling,
Kent, ME2**

OVER 60?

Secure this property
for up to **59% less!**

Wards
Helping you move forwards



Main features

- A truly breath-taking house in a very desirable location
- Ample parking on the large driveway
- Lovely hotel style shower room
- Stunning kitchen/breakfast area - the perfect place to entertain
- Versatile downstairs space plus a pretty rear garden to enjoy all year round

Accommodation

GROUND FLOOR

Lounge: 14'2 x 9'6 (4.32m x 2.90m)

Kitchen/Breakfast Area: 19'8 x 11'9 (6.00m x 3.58m)

Dining Area: 15'3 x 7'11 (4.65m x 2.41m)

FIRST FLOOR

Landing

Bedroom 1: 10'7 x 9'0 (3.23m x 2.75m)

Bedroom 2: 10'6 x 7'10 (3.20m x 2.39m)

Shower Room

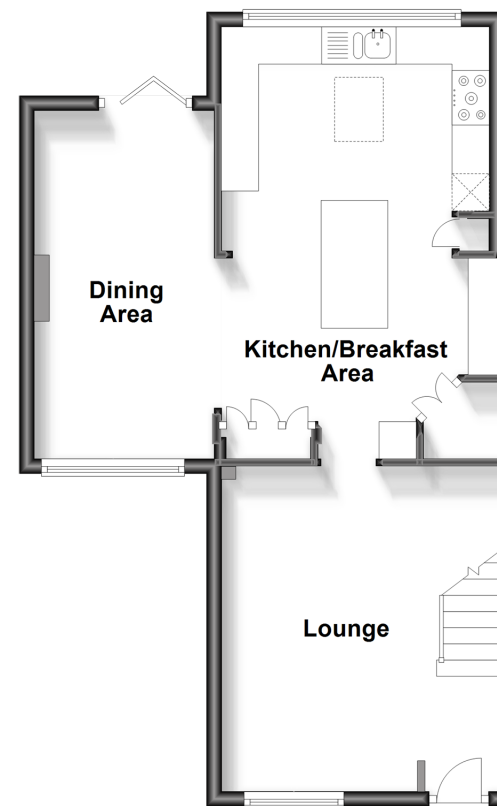
OUTSIDE

Front and Rear Gardens

Driveway

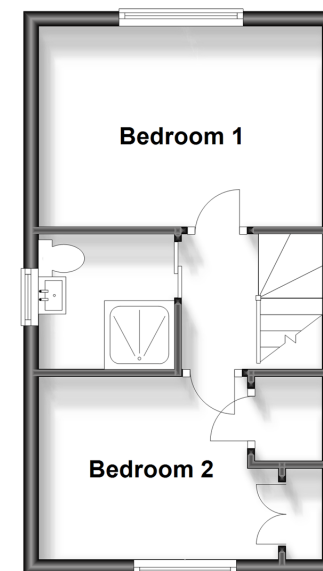
Ground Floor

Approx. 50.3 sq. metres (540.9 sq. feet)



First Floor

Approx. 27.3 sq. metres (294.0 sq. feet)



Call Snodland - 01634 245055 ■ wardsof Kent.co.uk

- Legal advice should be taken to verify fixtures/fittings, planning, alterations and/or lease details
- Appliances & services are untested, dimensions are approximate and floor plans are not to scale
- Through a Homewise Home For Life Plan people aged 60+ can secure this property for up to 59% less, by purchasing a Lifetime Lease.



13820871/20230826/CG/LK