



Price

£570,000

Freehold

3x  3x  2x 

**Wendover Close,
Halling, Rochester, Kent,
ME2**

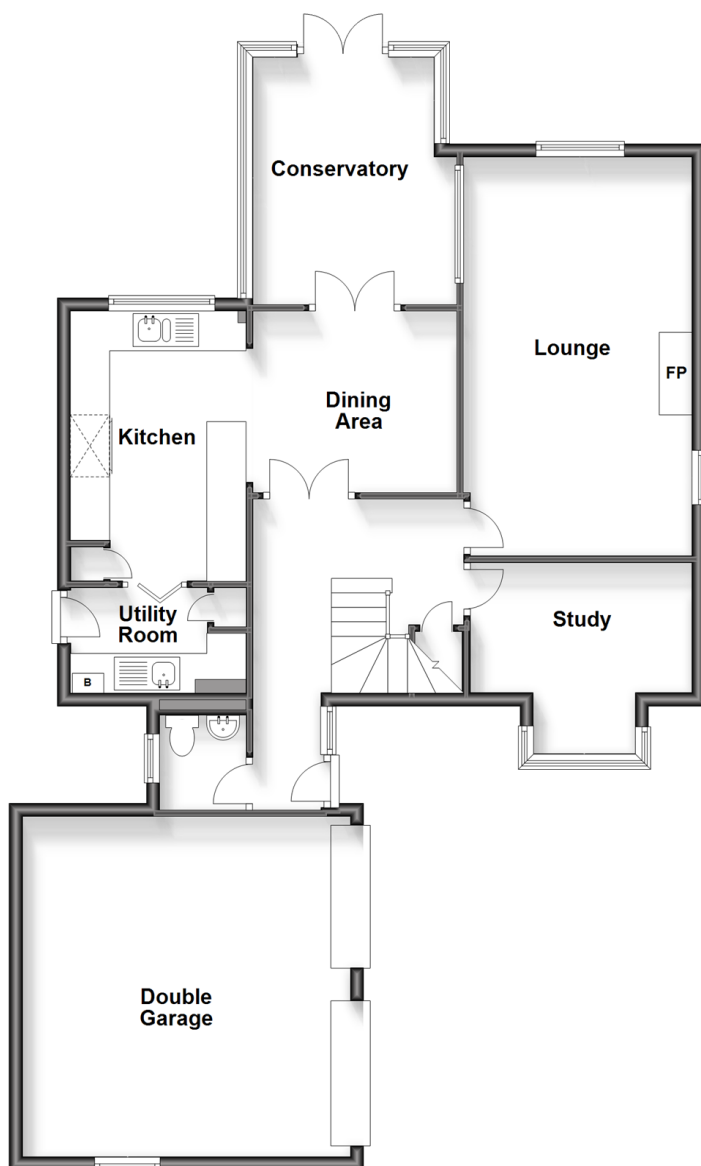
OVER 60?

Secure this property
for up to **59% less!**

Wards
Helping you move forwards

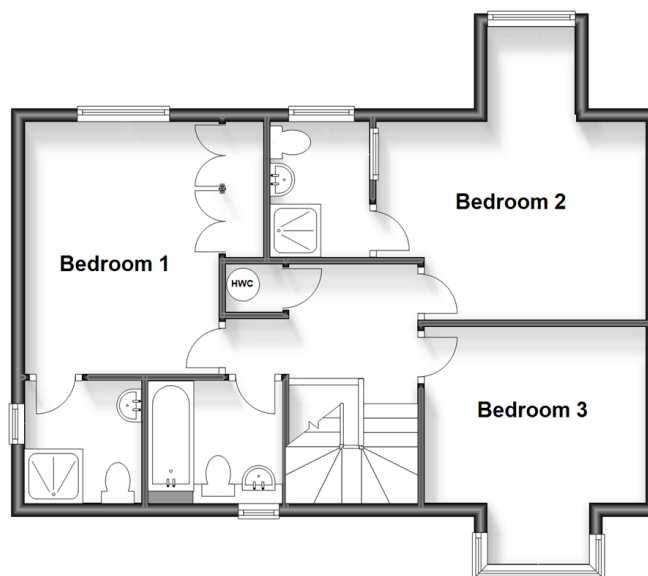
Ground Floor

Approx. 107.5 sq. metres (1157.4 sq. feet)



First Floor

Approx. 58.5 sq. metres (629.9 sq. feet)



Accommodation

GROUND FLOOR

Entrance Hall

Cloakroom

Study: 11'1 x 9'6 (3.38m x 2.90m)

Lounge: 19'11 x 11'4 (6.07m x 3.46m)

Kitchen and Dining Area: 19'5 x 13'5 (5.92m x 4.09m)

Utility Room: 9'5 x 5'2 (2.87m x 1.58m)

Conservatory: 12'9 x 9'9 (3.89m x 2.97m)

FIRST FLOOR

Landing

Bedroom 1: 14'4 x 13'9 (4.37m x 4.19m)

En-Suite Shower Room: 6'8 x 5'0 (2.03m x 1.53m)

Bedroom 2: 11'8 x 11'3 (3.56m x 3.43m)

En-Suite Shower Room: 6'2 x 5'10 (1.88m x 1.78m)

Bedroom 3: 12'7 x 9'8 (3.84m x 2.95m)

Bathroom: 6'9 x 6'2 (2.06m x 1.88m)

OUTSIDE

Front, Side and Rear Gardens

Double Garage and Driveway



Main features

- Immaculately presented detached home in a tucked away sought after location with river walks
- Beautiful, spacious rear garden to relax in
- Double garage and driveway with ample parking
- Spacious kitchen and dining area - perfect for entertaining plus a handy utility room
- Great size bedrooms with 2 en-suite shower rooms and a bathroom



Nearest Schools

Primary Schools: Halling Primary 0.3, Valley Invicta Primary 1.0 miles. Secondary Schools: Holmesdale Technology College 1.8 miles, The Thomas Aveling School 2.5 miles, Sir Joseph Williamson's Mathematical School 2.5 miles



Transport Information

Train Stations: Halling 0.2 miles, Snodland 1.4 miles, Cuxton 1.7 miles



Address

Wendover Close, Halling, Rochester, Kent, ME2



Directions

For directions to this property please contact us.



Wards
Helping you move forwards

Call Snodland Branch 01634 245055 ■ wardsofkent.co.uk



■ Legal advice should be taken to verify fixtures/fittings, planning, alterations and/or lease details ■ Appliances & services are untested, dimensions are approximate and floor plans are not to scale
■ Through a Homewise Home For Life Plan people aged 60+ can secure this property for up to 59% less, by purchasing a Lifetime Lease.



13821167/20230805/CG/ST