



OVER 60?

Secure this property
for up to **59% less!**

Price

£570,000

Freehold

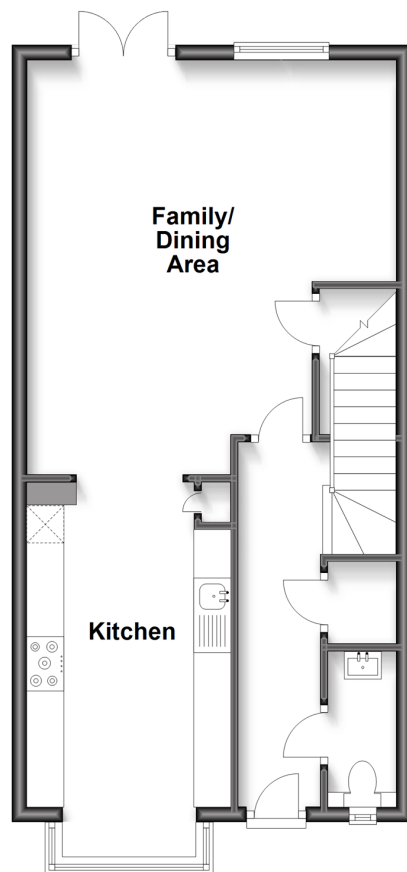
5x  2x  1x 

**Steadman Close,
Holborough Lakes, Kent,
ME6**

Wards
Helping you move forwards

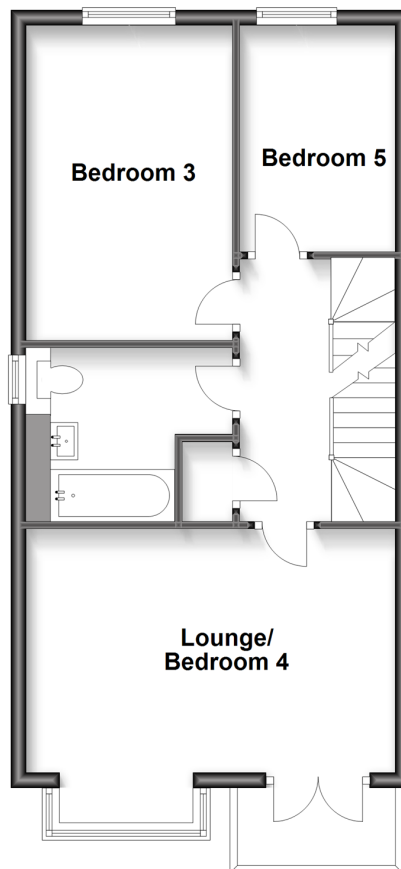
Ground Floor

Approx. 50.6 sq. metres (544.4 sq. feet)



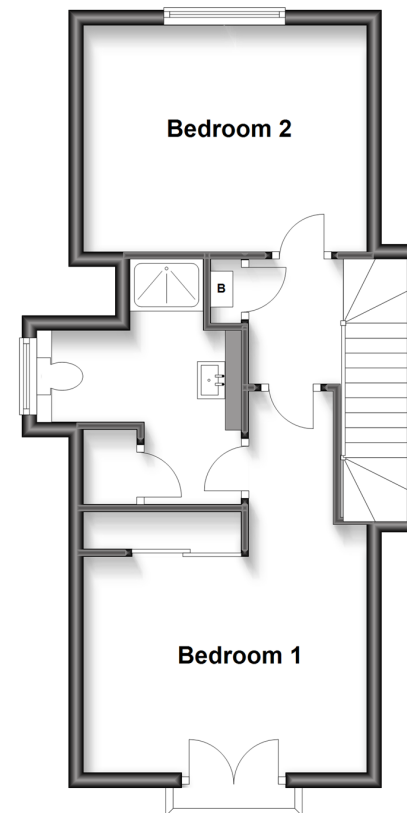
First Floor

Approx. 50.6 sq. metres (544.4 sq. feet)



Second Floor

Approx. 40.3 sq. metres (433.3 sq. feet)



Accommodation

GROUND FLOOR

Entrance Hall
Cloakroom
Kitchen: 17'7 x 9'0 (5.36m x 2.75m)
Family/Dining Area: 18'2 x 16'4 (5.54m x 4.98m)

FIRST FLOOR

Landing
Lounge/Bedroom 4: 16'3 x 10'4 (4.96m x 3.15m)
Balcony
Bedroom 3: 13'10 x 9'1 (4.22m x 2.77m)
Bedroom 5: 9'11 x 6'11 (3.02m x 2.11m)
Bathroom

SECOND FLOOR

Landing
Bedroom 2: 12'6 x 9'10 (3.81m x 3.00m)
Bedroom 1: 16'10 x 12'6 (5.13m x 3.81m)
En-Suite Shower Room

OUTSIDE

Front and Rear Gardens
Garage and Driveway
Allocated Parking Space



Main features

- Beautifully presented family home on the prestigious Holborough Lakes development
- Truly stunning kitchen and family/dining area - perfect for family life and entertaining
- Gorgeous outlook to the front
- Handy parking for 2 cars and a garage so no stress parking here
- Complete flexibility of living space to suite your family needs to make this your forever home



Nearest Schools

Primary Schools: Valley Invicta Primary 0.1 miles, Snodland CofE Primary 0.3 miles, St Katherine's School 0.6 miles. Secondary Schools: Holmesdale Technology College 0.7 miles, Grange Park School 2.4 miles, Aylesford School - Sports College 2.7 miles



Transport Information

Train Stations: Snodland 0.5 miles, Halling 1.2 miles, New Hythe 1.6 miles



Address

Steadman Close, Holborough Lakes, Kent, ME6



Directions

For directions to this property please contact us.



Call Snodland Branch 01634 245055 ■ wardsofkent.co.uk



- Legal advice should be taken to verify fixtures/fittings, planning, alterations and/or lease details
- Appliances & services are untested, dimensions are approximate and floor plans are not to scale
- Through a Homewise Home For Life Plan people aged 60+ can secure this property for up to 59% less, by purchasing a Lifetime Lease.



13821195/20230201/MM/LK