



Price
£255,000

Freehold

2x  1x  1x 

**Waghorn Road,
Snodland, Kent, ME6**

OVER 60?

Secure this property
for up to **59% less!**



Video Tour available

Wards
Helping you move forwards



Main features

- Great size period home in an extremely central location
- Opportunity to create your dream home
- Handy double garage to the rear so no issues parking after a long day
- No forward chain
- Amazing entertaining space in the lovely size lounge and dining area

Accommodation

GROUND FLOOR

Lounge: 13'1 x 10'10 (3.99m x 3.30m)
Dining Area: 11'5 x 10'3 (3.48m x 3.13m)
Kitchen: 8'9 x 7'10 (2.67m x 2.39m)

FIRST FLOOR

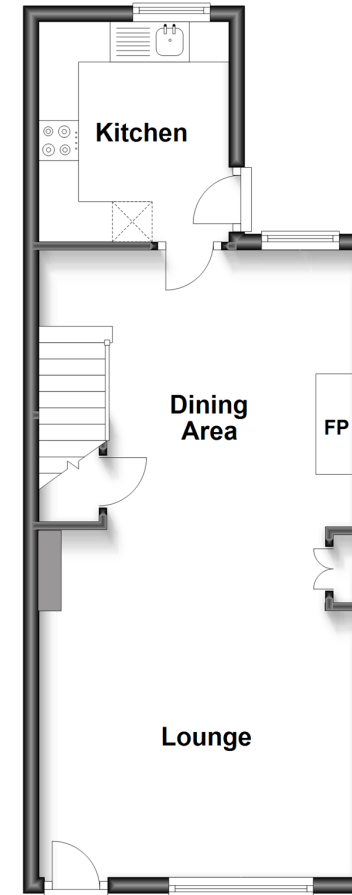
Landing
Bedroom 1: 13'2 x 11'0 (4.02m x 3.36m)
Bedroom 2: 13'1 x 11'7 (3.99m x 3.53m)
En-Suite Bathroom

OUTSIDE

Front and Rear Gardens
Garage to Rear

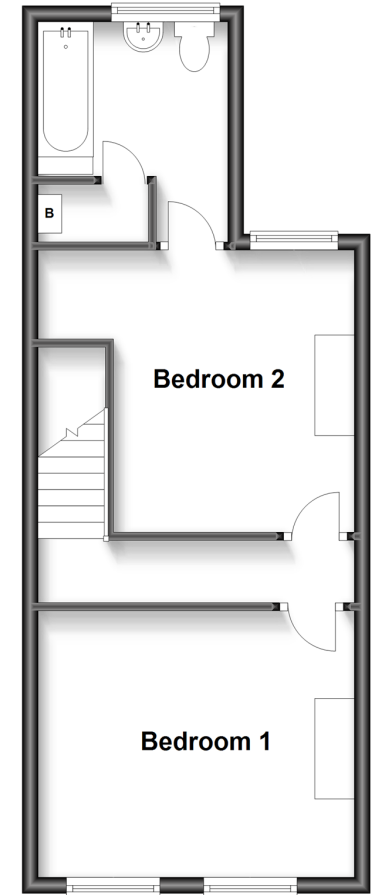
Ground Floor

Approx. 37.9 sq. metres (408.2 sq. feet)



First Floor

Approx. 37.9 sq. metres (408.2 sq. feet)



Call Snodland - 01634 245055 ■ wardsofKent.co.uk

- Legal advice should be taken to verify fixtures/fittings, planning, alterations and/or lease details
- Appliances & services are untested, dimensions are approximate and floor plans are not to scale
- Through a Homewise Home For Life Plan people aged 60+ can secure this property for up to 59% less, by purchasing a Lifetime Lease.



13821344/20230107/CG/LK