



Price
£270,000

Freehold

3x  1x  1x 

**Constitution Hill,
Snodland, Kent, ME6**

OVER 60?

Secure this property
for up to **59% less!**



Video Tour available

Wards
Helping you move forwards



Main features

- Great size home in the heart of Snodland village
- All bedrooms are doubles
- Ready to move straight into, but opportunity to make it your own
- Fantastic outside space which really is perfect for summer parties
- Amazing travel links close by - great for commuting or a day trip out

Accommodation

GROUND FLOOR

Lounge: 11'4 x 11'0 (3.46m x 3.36m)
Kitchen/Diner: 11'0 x 10'4 (3.36m x 3.15m)
Bathroom

FIRST FLOOR

Landing
Bedroom 1: 11'0 x 11'0 (3.36m x 3.36m)
Bedroom 2: 11'0 x 6'4 (3.36m x 1.93m)

SECOND FLOOR

Bedroom 3: 12'4 into recess x 10'11 into recess (3.76m x 3.33m)

OUTSIDE

Front and Rear Gardens

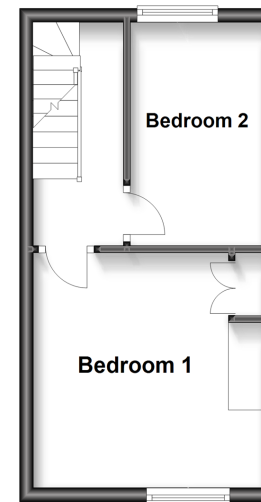
Ground Floor

Approx. 286.7 sq. feet



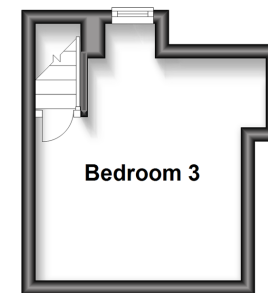
First Floor

Approx. 236.9 sq. feet



Second Floor

Approx. 111.4 sq. feet



Call Snodland - 01634 245055 ■ wardsofKent.co.uk

■ Legal advice should be taken to verify fixtures/fittings, planning, alterations and/or lease details
■ Through a Homewise Home For Life Plan people aged 60+ can secure this property for up to 59% less, by purchasing a Lifetime Lease.

■ Appliances & services are untested, dimensions are approximate and floor plans are not to scale



13821412/20230704/CG/LK