



**OVER 60?**

Secure this property  
for up to **59% less!**

**Price**

**£220,000**

**Leasehold**

2x  2x  1x 

**Mineral House,  
Limeburners Drive,  
Halling, Kent, ME2**

*Wards*  
Helping you move forwards





## Main features

- **Executive ground floor apartment situated in St Andrews Park**
- **En-suite shower room and bathroom, so no morning queues here**
- **Extremely light with a fantastic open plan layout**
- **Convenient allocated parking space**
- **Offered with no onward chain**

## Accommodation

### GROUND FLOOR

#### Entrance Hall

Lounge/Dining/Kitchen: 24'0 x 10'11  
(7.32m x 3.33m)

Bedroom 1: 13'7 x 9'11 up to fitted wardrobes (4.14m x 3.02m)

#### En-Suite Shower Room

Bedroom 2: 13'9 x 9'3 (4.19m x 2.82m)

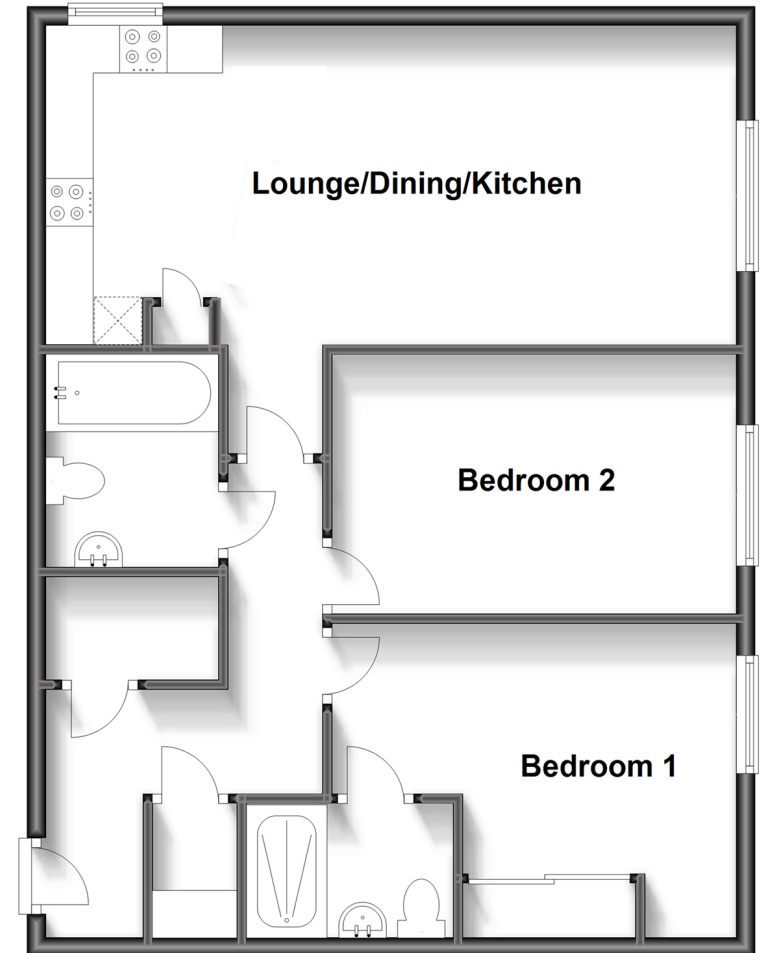
#### Bathroom

### OUTSIDE

Allocated Parking Space

## Ground Floor

Approx. 69.8 sq. metres (751.3 sq. feet)



**Call Snodland - 01634 245055 ■ [wardsof Kent.co.uk](http://wardsof Kent.co.uk)**

- Legal advice should be taken to verify fixtures/fittings, planning, alterations and/or lease details
- Appliances & services are untested, dimensions are approximate and floor plans are not to scale
- Through a Homewise Home For Life Plan people aged 60+ can secure this property for up to 59% less, by purchasing a Lifetime Lease.



13821450/20231122/CG/LK