



OVER 60?

Secure this property
for up to **59% less!**

Price

£220,000

Leasehold

2x  2x  1x 

**Mortar House,
Limeburners Drive,
Halling, Kent, ME2**

Wards
Helping you move forwards



Main features

- **Fantastic size ground floor apartment ready to move into**
- **The perfect location for any professional with great travel links**
- **Family bathroom and en-suite shower room**
- **Excellent sociable space - perfect for entertaining friends and family**
- **Handy allocated parking space**

Accommodation

GROUND FLOOR

Entrance Hall

Lounge/Kitchen/Dining Area: 24'0 x 10'8 (7.32m x 3.25m)

Bedroom 1: 10'8 x 10'6 (3.25m x 3.20m)

En-Suite Shower Room

Bedroom 2: 13'7 x 9'0 (4.14m x 2.75m)

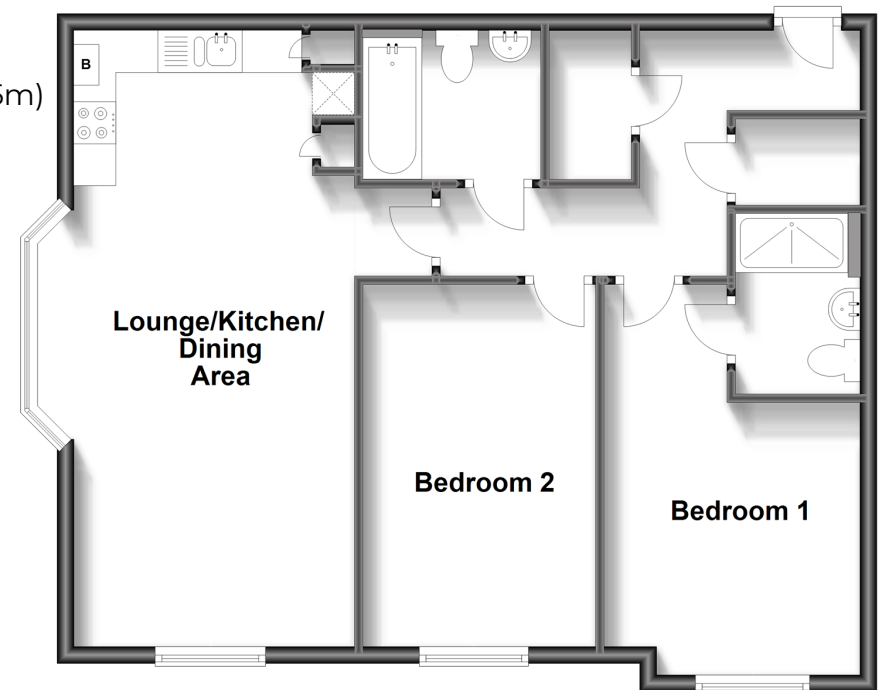
Bathroom

OUTSIDE

Allocated Parking Space

Ground Floor

Approx. 69.4 sq. metres (746.6 sq. feet)



Call Snodland - 01634 245055 ■ wardsofKent.co.uk

■ Legal advice should be taken to verify fixtures/fittings, planning, alterations and/or lease details
 ■ Through a Homewise Home For Life Plan people aged 60+ can secure this property for up to 59% less, by purchasing a Lifetime Lease.

■ Appliances & services are untested, dimensions are approximate and floor plans are not to scale