



**Price**  
**£425,000**

**Freehold**

4x  2x  2x 

**Roberts Road, Snodland,  
Kent, ME6**

**OVER 60?**

Secure this property  
for up to **59% less!**

*Wards*  
Helping you move forwards





## Main features

- Beautifully presented family home in the quiet village of Snodland
- Gorgeous kitchen/diner which is perfect for entertaining
- Downstairs wet room and upstairs shower room
- Driveway awaits you so no stress parking after a long day
- Offering versatile living space

## Accommodation

### GROUND FLOOR

Entrance Hall

Study: 7'11 x 7'2 (2.41m x 2.19m)

Lounge: 15'2 x 12'6 (4.63m x 3.81m)

Kitchen/Diner: 19'10 x 17'5 at widest point (6.05m x 5.31m)

Bedroom 4/Family Room: 23'8 x 7'2 (7.22m x 2.19m)

Wet Room: 8'6 x 7'2 (2.59m x 2.19m)

### FIRST FLOOR

Landing

Bedroom 1: 12'6 x 9'2 (3.81m x 2.80m)

Bedroom 2: 11'7 x 11'6 (3.53m x 3.51m)

Bedroom 3: 9'4 x 7'11 (2.85m x 2.41m)

Shower Room

### OUTSIDE

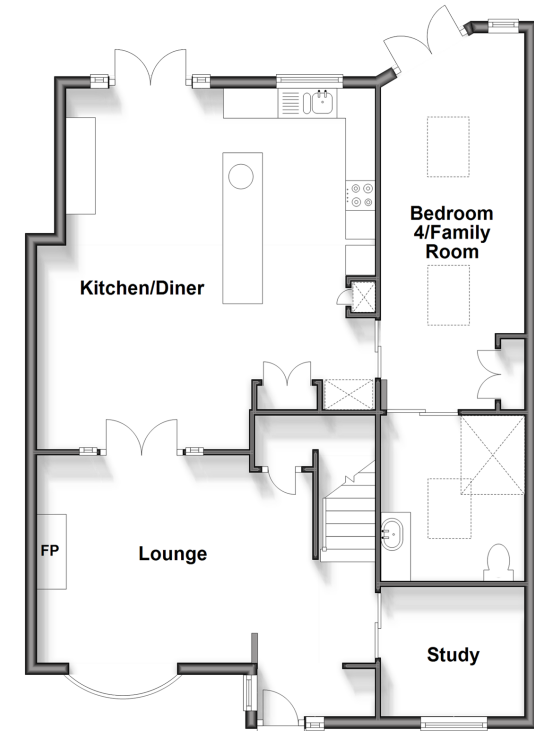
Driveway

Rear Garden

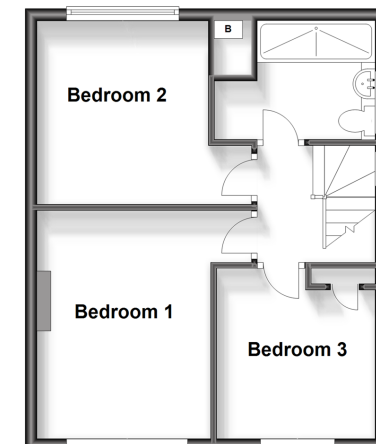
**Call Snodland - 01634 245055 ■ [wardsof Kent.co.uk](http://wardsof Kent.co.uk)**

- Legal advice should be taken to verify fixtures/fittings, planning, alterations and/or lease details
- Appliances & services are untested, dimensions are approximate and floor plans are not to scale
- Through a Homewise Home For Life Plan people aged 60+ can secure this property for up to 59% less, by purchasing a Lifetime Lease.

**Ground Floor**  
Approx. 84.0 sq. metres (904.3 sq. feet)



**First Floor**  
Approx. 40.1 sq. metres (431.2 sq. feet)



13821490/20240426/MM/LK