



Price
£180,000

Leasehold

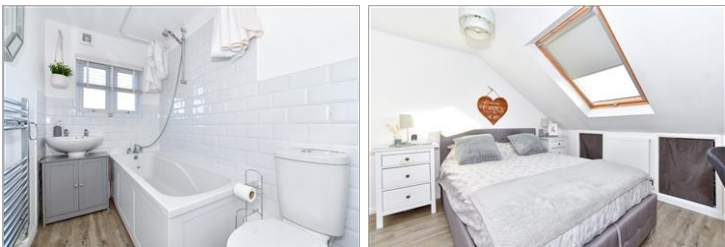
2x  1x  1x 

**Malling Road, Snodland,
Kent, ME6**

OVER 60?

Secure this property
for up to **59% less!**

Wards
Helping you move forwards



Main features

- Centrally located duplex maisonette with your very own private garden
- Immaculately presented throughout
- Extremely economical to run
- Handy downstairs cloakroom and upstairs bathroom
- Excellent storage solutions throughout, plus your very own dressing area too

Accommodation

FIRST FLOOR

Hallway

Lounge: 12'9 x 12'1 (3.89m x 3.69m)

Kitchen: 6'11 x 6'7 (2.11m x 2.01m)

Cloakroom: 6'9 x 2'11 (2.06m x 0.89m)

Bedroom 2: 12'4 x 7'5 (3.76m x 2.26m)

SECOND FLOOR

Bedroom 1: 10'10 x 10'6 (3.30m x 3.20m)

En-Suite Bathroom: 7'8 x 4'9 (2.34m x 1.45m)

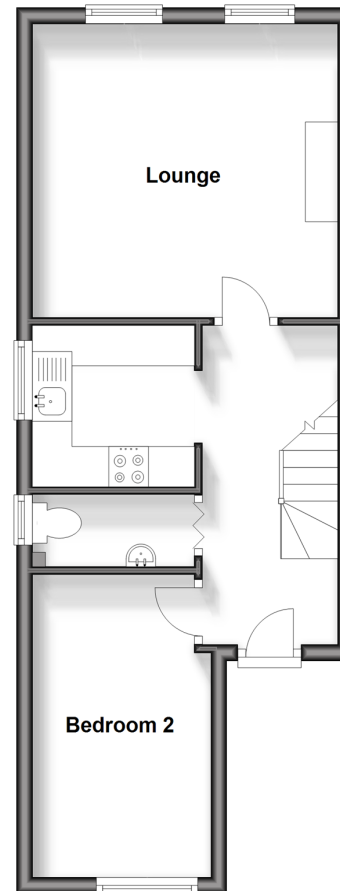
Dressing Area: 7'8 x 3'8 (2.34m x 1.12m)

OUTSIDE

Rear Garden

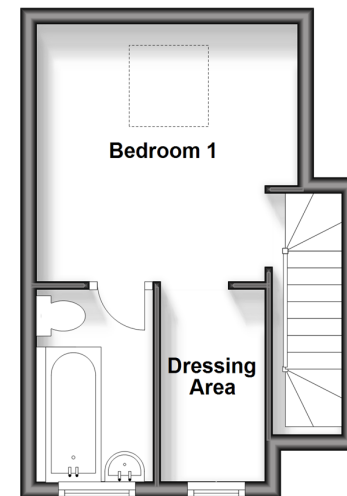
First Floor

Approx. 36.2 sq. metres (390.0 sq. feet)



Second Floor

Approx. 19.9 sq. metres (214.5 sq. feet)



Call Snodland - 01634 245055 ■ wardsof Kent.co.uk

- Legal advice should be taken to verify fixtures/fittings, planning, alterations and/or lease details
- Appliances & services are untested, dimensions are approximate and floor plans are not to scale
- Through a Homewise Home For Life Plan people aged 60+ can secure this property for up to 59% less, by purchasing a Lifetime Lease.



13821509/20240130/CG/LK