



OVER 60?

Secure this property
for up to **59% less!**

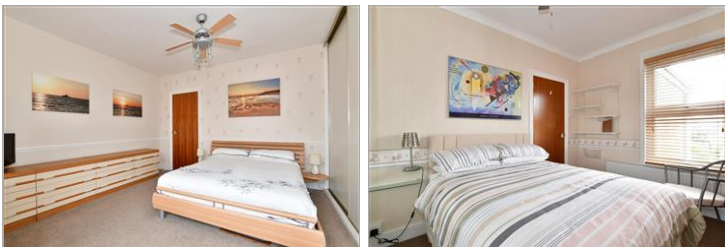
Price
£325,000

Freehold

2x  1x  2x 

**Malling Road, Snodland,
Kent, ME6**

Wards
Helping you move forwards



Main features

- Ready to move into period home in the heart of Snodland village
- The handy driveway makes returning home a breeze
- Lovely rear garden to enjoy
- Fantastic space inside to make this the perfect forever home
- Extremely rare upstairs independent bathroom plus downstairs cloakroom

Accommodation

GROUND FLOOR

Entrance Hall

Lounge: 11'11 x 10'5 (3.63m x 3.18m)

Dining Area: 13'9 x 12'10 (4.19m x 3.91m)

Kitchen: 9'4 x 8'1 (2.85m x 2.47m)

Cloakroom

FIRST FLOOR

Landing

Bedroom 1: 14'6 x 12'0 (4.42m x 3.66m)

Bedroom 2: 10'10 x 8'11 (3.30m x 2.72m)

Bathroom: 9'4 x 8'3 (2.85m x 2.52m)

OUTSIDE

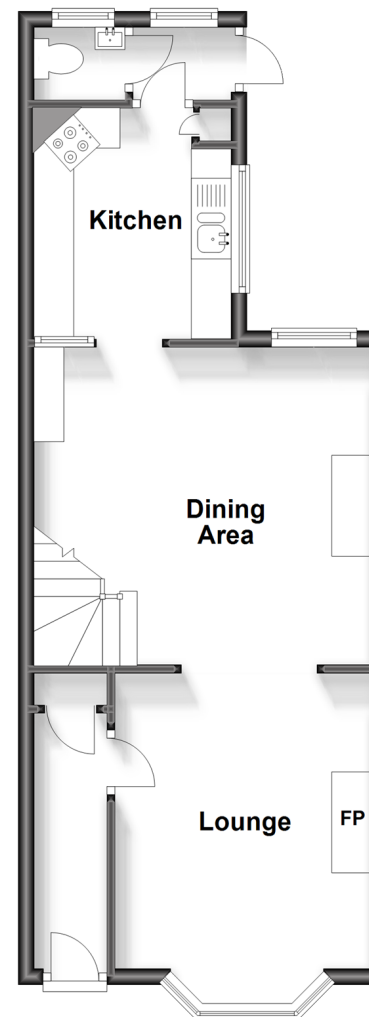
Front and Rear Gardens

Detached Conservatory: 9'10 x 9'10 (3.00m x 3.00m)

Driveway

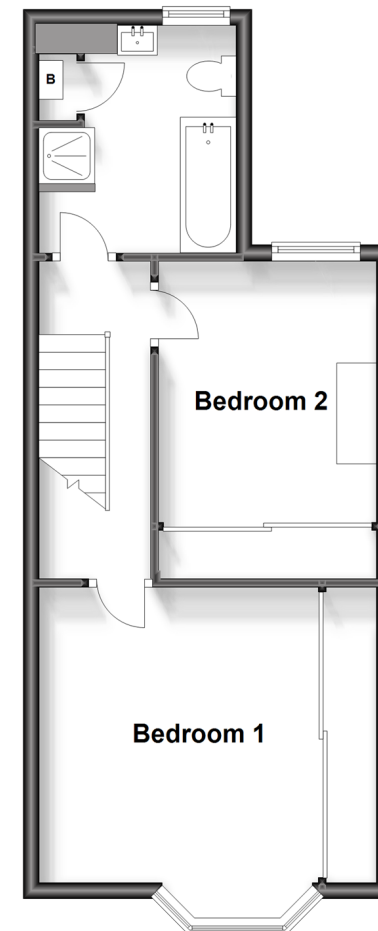
Ground Floor

Approx. 42.6 sq. metres (459.0 sq. feet)



First Floor

Approx. 40.1 sq. metres (431.2 sq. feet)



Call Snodland - 01634 245055 ■ wardsof Kent.co.uk

- Legal advice should be taken to verify fixtures/fittings, planning, alterations and/or lease details
- Appliances & services are untested, dimensions are approximate and floor plans are not to scale
- Through a Homewise Home For Life Plan people aged 60+ can secure this property for up to 59% less, by purchasing a Lifetime Lease.



13821519/20231007/CG/LK