



Price
£270,000

Freehold

3x  1x  1x 

**Meadow Close, Iwade,
Sittingbourne, Kent,
ME9**

OVER 60?

Secure this property
for up to **59% less!**

Wards
Helping you move forwards



Main features

- Separate study to the front
- No onward chain, perfect for first time buyers and investors alike
- Refurbished kitchen
- Close to local schools, shops and amenities
- In the process of obtaining planning consent for a drop kerb

Accommodation

GROUND FLOOR

Entrance Hall

Cloakroom

Study: 10'8 x 6'9 (3.25m x 2.06m)

Kitchen: 16'4 x 8'9 (4.98m x 2.67m)

Lounge/Diner: 15'3 x 13'4 (4.65m x 4.07m)

FIRST FLOOR

Landing

Bedroom 1: 16'0 x 8'9 (4.88m x 2.67m)

Bedroom 2: 13'8 x 8'7 (4.17m x 2.62m)

Bedroom 3: 10'5 x 6'8 (3.18m x 2.03m)

Bathroom

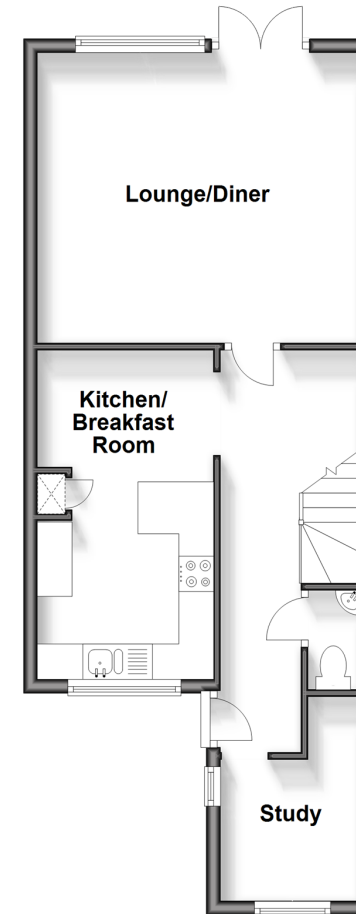
OUTSIDE

Front Garden

Rear Garden

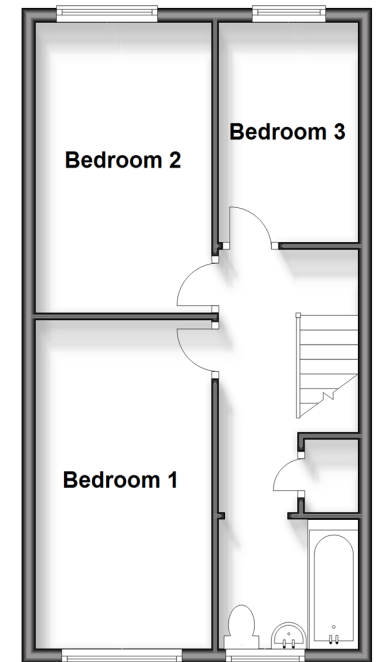
Ground Floor

Approx. 47.2 sq. metres (508.5 sq. feet)



First Floor

Approx. 41.0 sq. metres (441.1 sq. feet)



Call Sittingbourne - 01795 427272 ■ wardsof Kent.co.uk

- Legal advice should be taken to verify fixtures/fittings, planning, alterations and/or lease details
- Appliances & services are untested, dimensions are approximate and floor plans are not to scale
- Through a Homewise Home For Life Plan people aged 60+ can secure this property for up to 59% less, by purchasing a Lifetime Lease.



13821562/20240411/KC/TB