



**OVER 60?**

Secure this property  
for up to **59% less!**

**Price**

**£350,000**

**Freehold**

2x  1x  1x 

**Roberts Road, Snodland,  
Kent, ME6**

*Wards*  
Helping you move forwards





## Main features

- Extremely spacious home in a sought after location in Snodland
- Versatile living to suit you as you will
- Handy parking for several cars
- Desirable corner plot gives you all you need to make this your forever home
- No work to be completed, so ready to move straight into and relax

## Accommodation

### GROUND FLOOR

#### Entrance Hall

Lounge: 15'0 x 10'10 (4.58m x 3.30m)

Kitchen: 10'10 x 10'0 (3.30m x 3.05m)

Bedroom 1: 11'0 x 10'11 (3.36m x 3.33m)

Bedroom 2: 11'2 x 9'11 (3.41m x 3.02m)

Bathroom: 7'2 x 6'3 (2.19m x 1.91m)

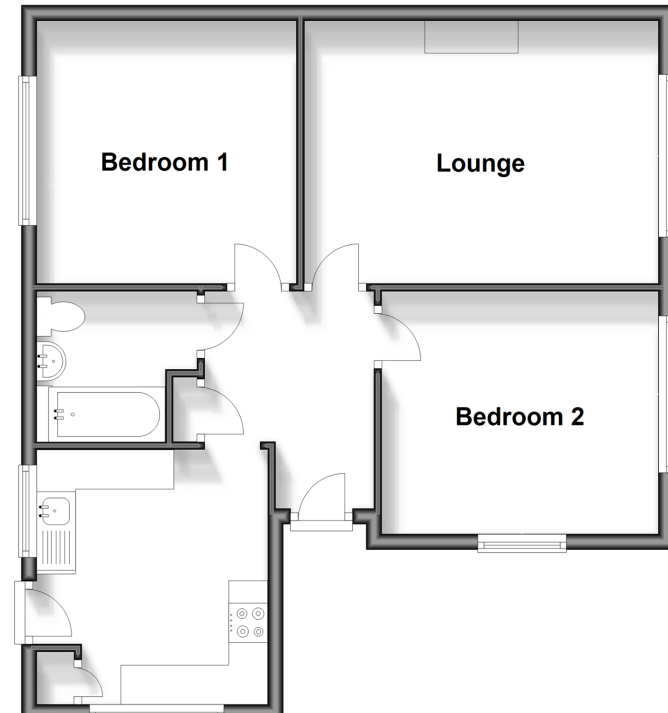
### OUTSIDE

Front and Rear Gardens

Driveway

### Ground Floor

Approx. 58.2 sq. metres (626.8 sq. feet)



**Call Snodland - 01634 245055 ■ [wardsofKent.co.uk](http://wardsofKent.co.uk)**

■ Legal advice should be taken to verify fixtures/fittings, planning, alterations and/or lease details  
 ■ Through a Homewise Home For Life Plan people aged 60+ can secure this property for up to 59% less, by purchasing a Lifetime Lease.

■ Appliances & services are untested, dimensions are approximate and floor plans are not to scale



13821574/20240124/CG/LK