



**Price**

**£325,000**

**Leasehold**

2x  2x  1x 

**Walters Close,  
Snodland, Kent, ME6**

**OVER 60?**

Secure this property  
for up to **59% less!**



Virtual Reality Tour available

*Wards*  
Helping you move forwards





## Main features

- This stunning apartment is all about the fabulous location
- Tranquil views of The Downs and lake from your balcony
- Handy parking for 2 cars
- Perfect entertaining space when having friends and family round
- Hotel style bathroom and en-suite shower room

## Accommodation

### SECOND FLOOR

Entrance Hall

Lounge/Diner: 16'9 x 12'10 (5.11m x 3.91m)

Balcony

Kitchen: 9'2 x 8'1 (2.80m x 2.47m)

Bedroom 1: 13'0 x 9'1 (3.97m x 2.77m)

En-Suite Shower Room

Bedroom 2: 13'0 x 10'5 (3.97m x 3.18m)

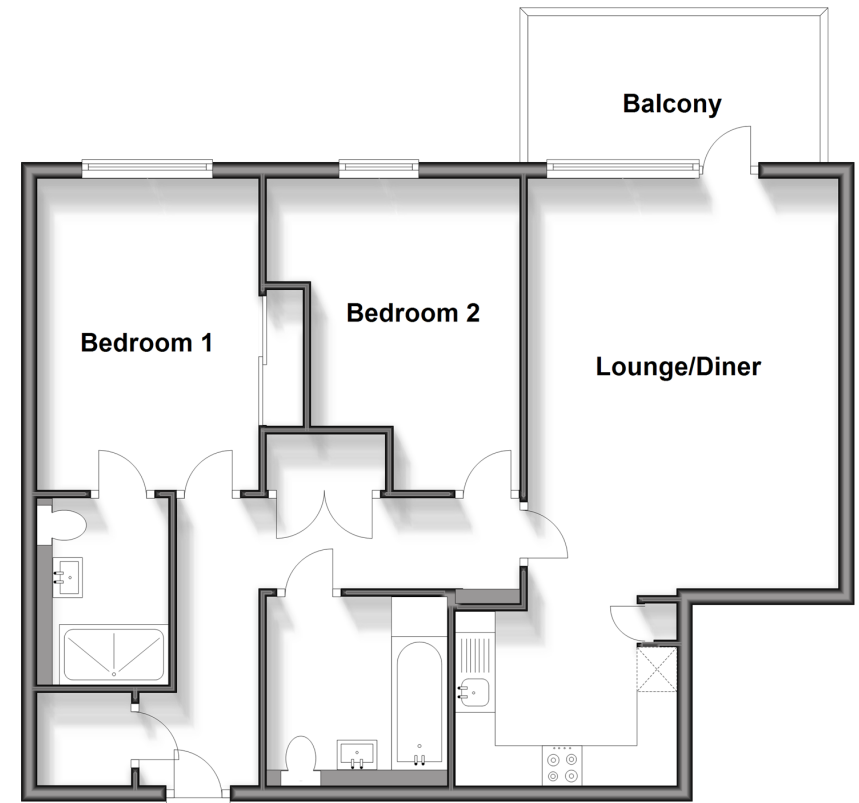
Bathroom

### OUTSIDE

2 Allocated Parking Spaces

### Second Floor

Approx. 71.4 sq. metres (768.4 sq. feet)



**Call Snodland - 01634 245055 ■ [wardsof Kent.co.uk](http://wardsof Kent.co.uk)**

- Legal advice should be taken to verify fixtures/fittings, planning, alterations and/or lease details
- Appliances & services are untested, dimensions are approximate and floor plans are not to scale
- Through a Homewise Home For Life Plan people aged 60+ can secure this property for up to 59% less, by purchasing a Lifetime Lease.



13821585/20240210/CG/LK