



**Price**  
**£250,000**

**Freehold**

2x  1x  1x 

**High Street, Halling,  
Rochester, Kent, ME2**

**OVER 60?**

Secure this property  
for up to **59% less!**

*Wards*  
Helping you move forwards





## Main features

- A modernised period home which is ready to move straight into
- All you need on your doorstep in this pretty village location
- Fantastic size private rear garden
- Lovely size kitchen which is perfect for any budding chef
- Great motorway and rail links for all your travel needs

## Accommodation

### GROUND FLOOR

Lounge: 9'10 x 9'7 (3.00m x 2.92m)

Dining Area: 13'8 x 9'7 (4.17m x 2.92m)

Kitchen: 9'7 x 9'0 (2.92m x 2.75m)

### SPLIT LEVEL FIRST FLOOR

Landing

Bedroom 1: 10'2 x 9'2 (3.10m x 2.80m)

Bedroom 2: 10'5 x 8'5 (3.18m x 2.57m)

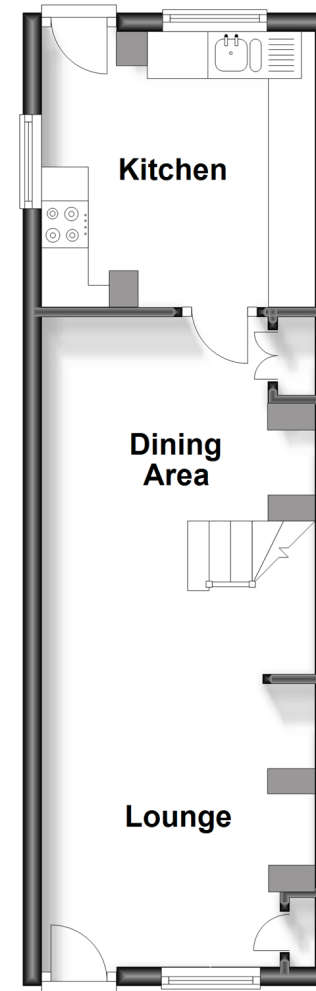
En-Suite Bathroom

### OUTSIDE

Rear Garden

### Ground Floor

Approx. 29.1 sq. metres (313.1 sq. feet)



### Split Level First Floor

Approx. 25.4 sq. metres (273.7 sq. feet)



**Call Snodland - 01634 245055 ■ [wardsof Kent.co.uk](http://wardsof Kent.co.uk)**

- Legal advice should be taken to verify fixtures/fittings, planning, alterations and/or lease details
- Appliances & services are untested, dimensions are approximate and floor plans are not to scale
- Through a Homewise Home For Life Plan people aged 60+ can secure this property for up to 59% less, by purchasing a Lifetime Lease.



13821591/20240309/CG/LK