



Price

£300,000

Leasehold

2x  2x  1x 

**Ashfield Close,
Holborough Lakes, Kent,
ME6**

OVER 60?

Secure this property
for up to **59% less!**

Wards
Helping you move forwards



Main features

- Immaculately presented coach house in a stunning location
- Gorgeous lake views from the comfort of your own home
- Easy parking with your very own garage plus allocated parking
- Excellent entertaining space in the lounge/kitchen/diner
- Onsite gym, nursery and lovely walks close by

Accommodation

FIRST FLOOR

Entrance Hall

Lounge/Kitchen/Diner: 19'8 x 11'5 (6.00m x 3.48m)

Bedroom 1: 12'8 x 8'11 (3.86m x 2.72m)

En-Suite Shower Room

Bedroom 2: 12'11 x 9'1 (3.94m x 2.77m)

Family Bathroom

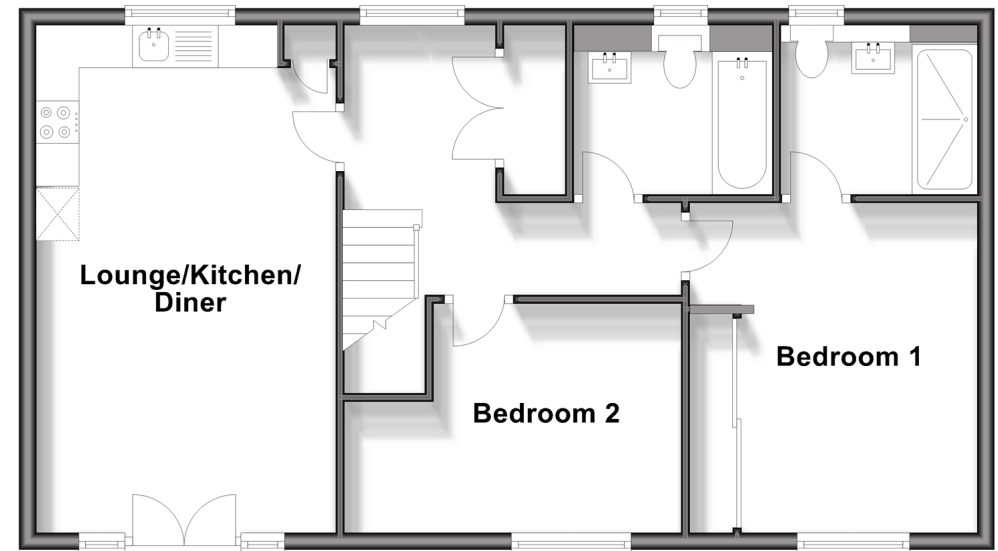
OUTSIDE

Garage

Allocated Parking Space

First Floor

Approx. 65.5 sq. metres (704.9 sq. feet)



Call Snodland - 01634 245055 ■ wardsofKent.co.uk

■ Legal advice should be taken to verify fixtures/fittings, planning, alterations and/or lease details
 ■ Through a Homewise Home For Life Plan people aged 60+ can secure this property for up to 59% less, by purchasing a Lifetime Lease.

■ Appliances & services are untested, dimensions are approximate and floor plans are not to scale