



**Price**

**£400,000**

**Freehold**

3x  1x  1x 

**Annie Road, Snodland,  
Kent, ME6**

**OVER 60?**

Secure this property  
for up to **59% less!**

*Wards*  
Helping you move forwards





## Main features

- Lovely bungalow located in a peaceful and private road
- Amazing driveway for approximately 6 cars - so handy for guests visiting
- Gorgeous open fire which really finishes the lovely lounge
- Extremely versatile living space
- Tranquil garden to enjoy all year round and perfect for entertaining

## Accommodation

### GROUND FLOOR

Entrance Hall

Bedroom 1: 10'8 x 9'8 (3.25m x 2.95m)

Bedroom 2: 13'11 x 9'0 (4.24m x 2.75m)

Bedroom 3: 10'8 x 6'7 (3.25m x 2.01m)

Bathroom

Kitchen: 10'11 x 8'0 (3.33m x 2.44m)

Lounge: 13'11 x 13'6 (4.24m x 4.12m)

Conservatory: 12'4 x 10'11 (3.76m x 3.33m)

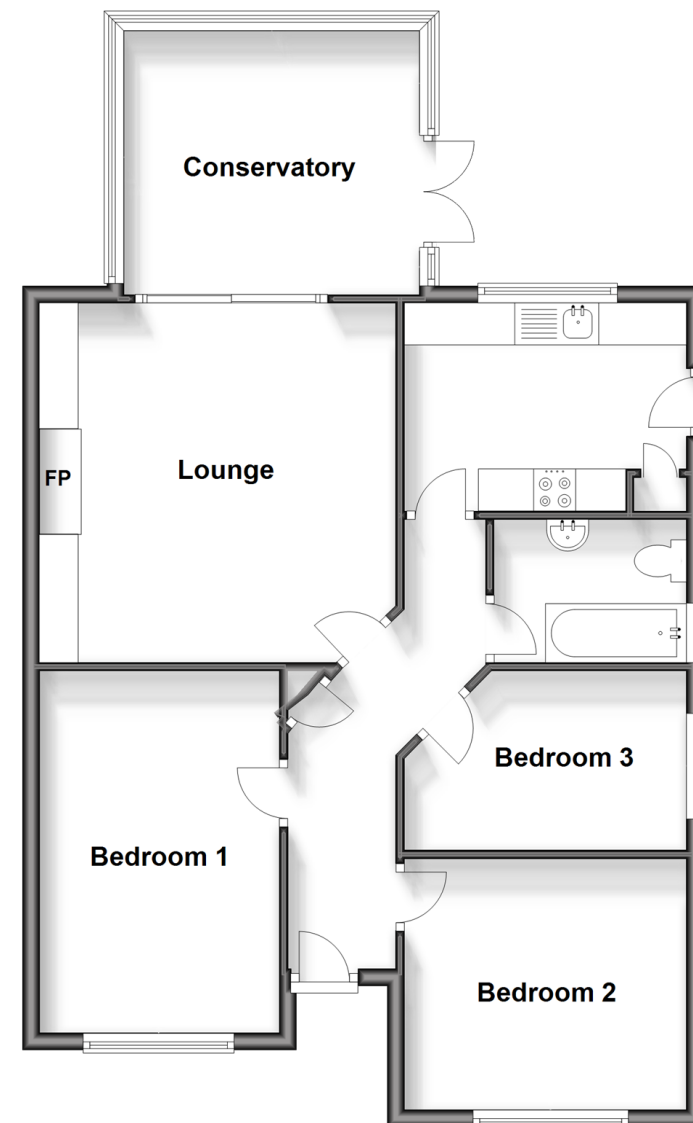
### OUTSIDE

Front and Rear Gardens

Driveway

## Ground Floor

Approx. 80.1 sq. metres (861.8 sq. feet)



**Call Snodland - 01634 245055 ■ [wardsofkent.co.uk](http://wardsofkent.co.uk)**

- Legal advice should be taken to verify fixtures/fittings, planning, alterations and/or lease details
- Appliances & services are untested, dimensions are approximate and floor plans are not to scale
- Through a Homewise Home For Life Plan people aged 60+ can secure this property for up to 59% less, by purchasing a Lifetime Lease.



13821603/20240323/CG/LK