



Price
£600,000

Freehold

4x  2x  2x 

**Maximilian Drive,
Halling, Rochester, Kent,
ME2**

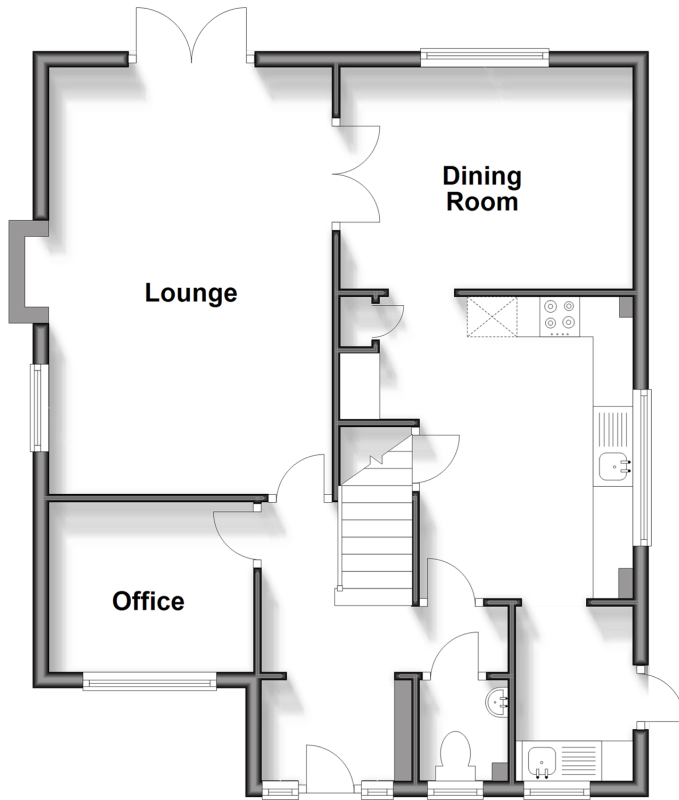
OVER 60?

Secure this property
for up to **59% less!**

Wards
Helping you move forwards

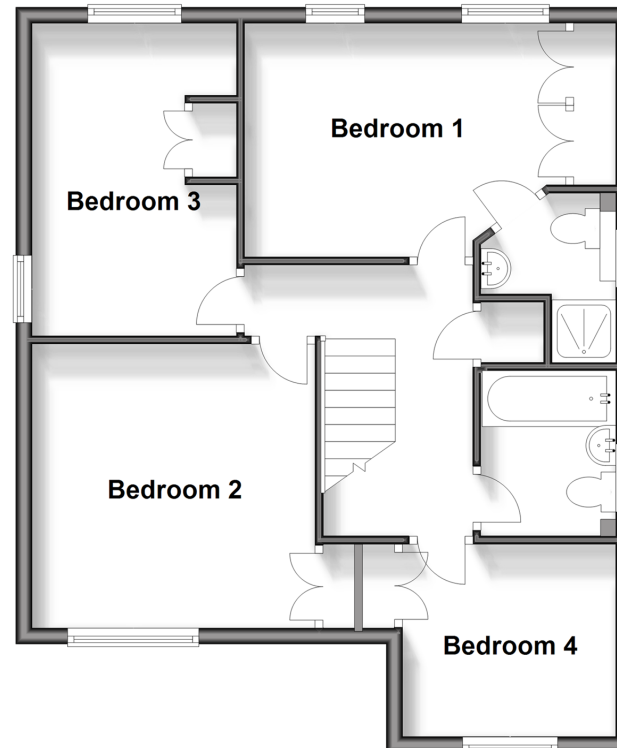
Ground Floor

Approx. 61.8 sq. metres (665.1 sq. feet)



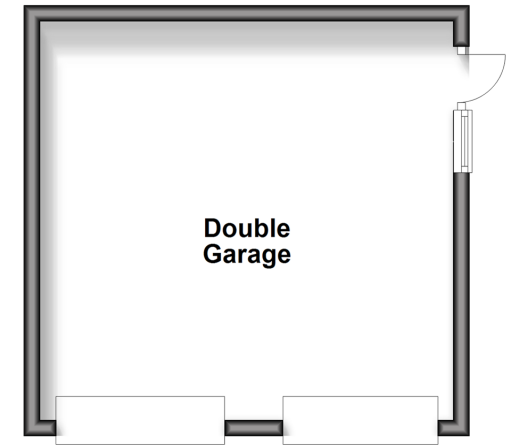
First Floor

Approx. 59.6 sq. metres (642.0 sq. feet)



Outbuilding

Approx. 25.9 sq. metres (279.3 sq. feet)



Accommodation

GROUND FLOOR

Entrance Hall
Cloakroom
Office: 8'5 x 7'2 (2.57m x 2.19m)
Lounge: 17'5 x 11'8 (5.31m x 3.56m)
Dining Room: 12'1 x 9'1 (3.69m x 2.77m)
Kitchen: 12'4 x 12'1 (3.76m x 3.69m)
Utility Room: 7'1 x 4'9 (2.16m x 1.45m)

FIRST FLOOR

Landing
Bedroom 1: 13'1 x 9'7 (3.99m x 2.92m)
En-Suite Shower Room
Bedroom 2: 11'10 x 11'9 (3.61m x 3.58m)
Bedroom 3: 12'10 x 8'5 (3.91m x 2.57m)
Bedroom 4: 8'9 x 8'1 (2.67m x 2.47m)
Family Bathroom

OUTBUILDING

Double Garage

OUTSIDE

Front and Rear Gardens
Driveway



Main features

- This perfectly positioned family home in the village of Halling is a must see
- Overlooking the pretty green and the river
- Great for family life with the bathroom, en-suite shower room and cloakroom
- Plenty of parking greets you with the detached double garage and driveway
- Gorgeous rear garden to enjoy all year round - this house really has it all



Nearest Schools

Primary Schools: Halling Primary 0.8 miles, Valley Invicta Primary 1.0 miles, Burham C of E Primary 1.9 miles.
Secondary Schools: Holmesdale Technology College 2.3 miles, Chatham South School 3.2 miles, Greenacre School 3.3 miles



Transport Information

Train Stations: Halling 0.4 miles, Cuxton 2.2 miles, Snodland 2.4 miles



Address

Maximilian Drive, Halling, Rochester, Kent, ME2



Directions

For directions to this property please contact us.



Wards
Helping you move forwards

Call Snodland Branch 01634 245055 ■ wardsofkent.co.uk



- Legal advice should be taken to verify fixtures/fittings, planning, alterations and/or lease details
- Appliances & services are untested, dimensions are approximate and floor plans are not to scale
- Through a Homewise Home For Life Plan people aged 60+ can secure this property for up to 59% less, by purchasing a Lifetime Lease.



13821608/20240511/CG/LK