



**OVER 60?**

Secure this property  
for up to **59% less!**

**Price**

**£300,000**

**Freehold**

2x  1x  1x 

**Goddens Cottages,  
Howland Road, Marden,  
Kent, TN12**

*Wards*  
Helping you move forwards





## Main features

- Well presented cottage
- Large rear sunny garden with cabin
- Driveway to the side of the property
- Modern open plan living area leading onto re-fitted kitchen, white goods to remain
- Situated on the edge of the popular village of Marden with local amenities and mainline station

## Accommodation

### GROUND FLOOR

Living Room: 19'4 x 12'0 (5.90m x 3.66m)

Kitchen: 8'5 x 7'1 (2.57m x 2.16m)

Bathroom

### FIRST FLOOR

Landing

Bedroom 1: 11'7 x 8'8 (3.53m x 2.64m)

Bedroom 2: 10'6 x 7'5 (3.20m x 2.26m)

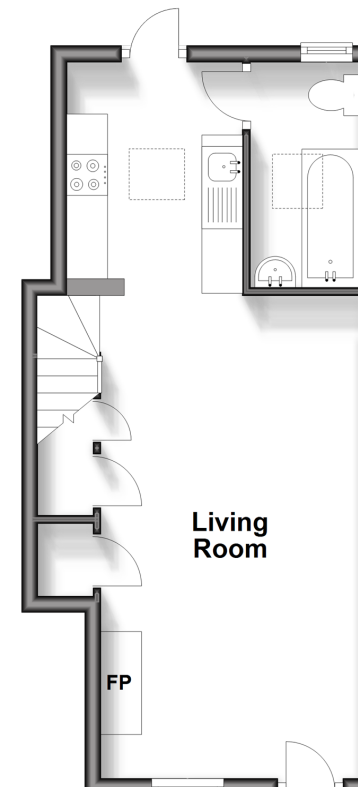
### OUTSIDE

Driveway to side of property

Large Rear Garden with cabin

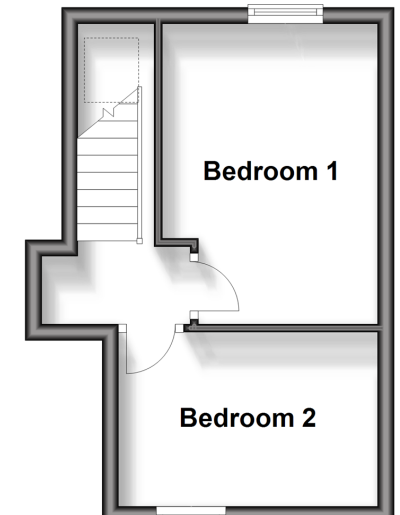
### Ground Floor

Approx. 31.6 sq. metres (340.4 sq. feet)



### First Floor

Approx. 20.9 sq. metres (225.0 sq. feet)



**Call Staplehurst - 01580 893322 ■ [wardsofkent.co.uk](http://wardsofkent.co.uk)**

- Legal advice should be taken to verify fixtures/fittings, planning, alterations and/or lease details
- Appliances & services are untested, dimensions are approximate and floor plans are not to scale
- Through a Homewise Home For Life Plan people aged 60+ can secure this property for up to 59% less, by purchasing a Lifetime Lease.



13919948/20240413/JG1/MF