



Price
£800,000

Freehold

4x  2x  2x 

**West End, Marden, Kent,
TN12**

OVER 60?

Secure this property
for up to **59% less!**

Wards
Helping you move forwards



Main features

- **Grade II Listing large Georgian house**
- **Situated in the heart of Marden**
- **Approximately 2 minutes walk to main line train station**
- **Open plan kitchen diner with large Inglenook**
- **Garage and driveway**

Accommodation

GROUND FLOOR

Entrance Hall

Lounge: 13'7 x 12'9 (4.14m x 3.89m)

Snug: 13'7 x 10'11 (4.14m x 3.33m)

Kitchen: 27'9 x 10'1 (8.46m x 3.08m)

Dining Area: 17'11 x 12'10 (5.46m x 3.91m)

Cloakroom: 7'3 x 2'7 (2.21m x 0.79m)

FIRST FLOOR

Landing

Bedroom 1: 13'10 x 12'4 (4.22m x 3.76m)

En-Suite Bathroom: 13'2 x 8'11 (4.02m x 2.72m)

Utility Area: 9'2 x 4'8 (2.80m x 1.42m)

Bedroom 2: 11'4 x 9'10 (3.46m x 3.00m)

Bedroom 3: 13'9 x 10'11 (4.19m x 3.33m)

Bedroom 4: 11'1 x 9'9 (3.38m x 2.97m)

Shower Room: 7'1 x 6'3 (2.16m x 1.91m)

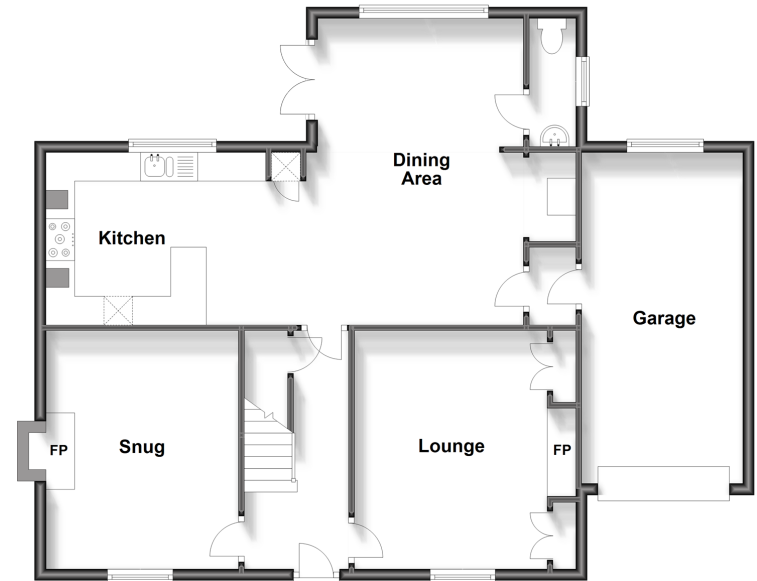
OUTSIDE

Integral Garage

Driveway

Front & Rear Gardens

Ground Floor
Approx. 94.7 sq. metres (1019.1 sq. feet)



First Floor
Approx. 84.1 sq. metres (905.4 sq. feet)



Call Staplehurst - 01580 893322 ■ wardsofKent.co.uk

- Legal advice should be taken to verify fixtures/fittings, planning, alterations and/or lease details
- Appliances & services are untested, dimensions are approximate and floor plans are not to scale
- Through a Homewise Home For Life Plan people aged 60+ can secure this property for up to 59% less, by purchasing a Lifetime Lease.



13920646/20231021/MF/JW