



Price
£450,000

Freehold

4x  2x  2x 

**Lime Close, Marden,
Kent, TN12**

OVER 60?

Secure this property
for up to **59% less!**

Wards
Helping you move forwards



Main features

- Located in the heart of the village
- Popular cul de sac location walkable to train station and local amenities
- Utility area and downstairs cloakroom
- Separate living room with kitchen and dining room at the rear of the property
- Private enclosed garden

Accommodation

GROUND FLOOR

Entrance Hall
Lounge: 15'10 x 15'8 (4.83m x 4.78m)
Kitchen: 9'7 x 9'7 (2.92m x 2.92m)
Dining Room: 9'8 x 8'7 (2.95m x 2.62m)
Utility Room
Former Garage

FIRST FLOOR

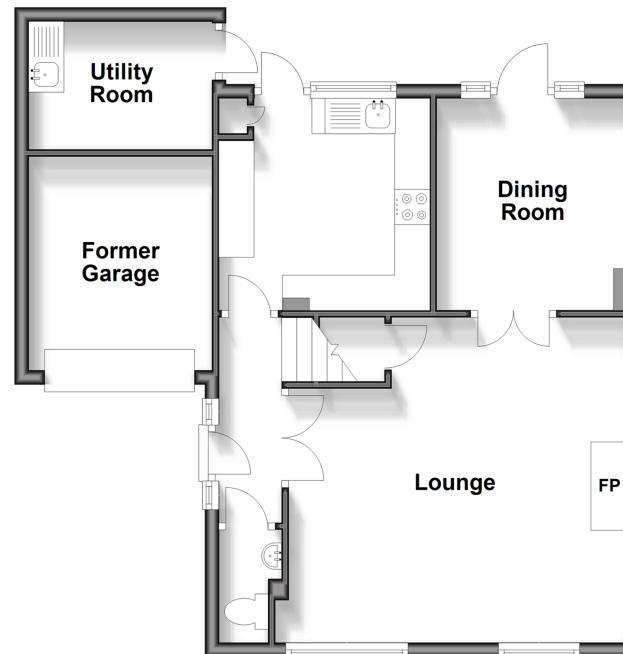
Landing
Bedroom 1: 12'7 x 9'5 (3.84m x 2.87m)
Bedroom 2: 10'6 x 9'5 (3.20m x 2.87m)
Bedroom 3: 8'9 x 7'3 (2.67m x 2.21m)
Bedroom 4: 8'9 x 7'11 (2.67m x 2.41m)
Bathroom

OUTSIDE

Front and Rear Garden
Driveway

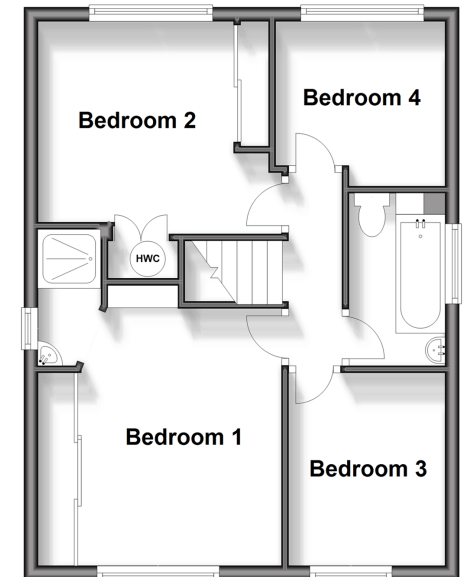
Ground Floor

Approx. 57.7 sq. metres (621.3 sq. feet)



First Floor

Approx. 44.5 sq. metres (479.1 sq. feet)



Call Staplehurst - 01580 893322 ■ wardsofkent.co.uk

■ Legal advice should be taken to verify fixtures/fittings, planning, alterations and/or lease details
■ Through a Homewise Home For Life Plan people aged 60+ can secure this property for up to 59% less, by purchasing a Lifetime Lease.

■ Appliances & services are untested, dimensions are approximate and floor plans are not to scale